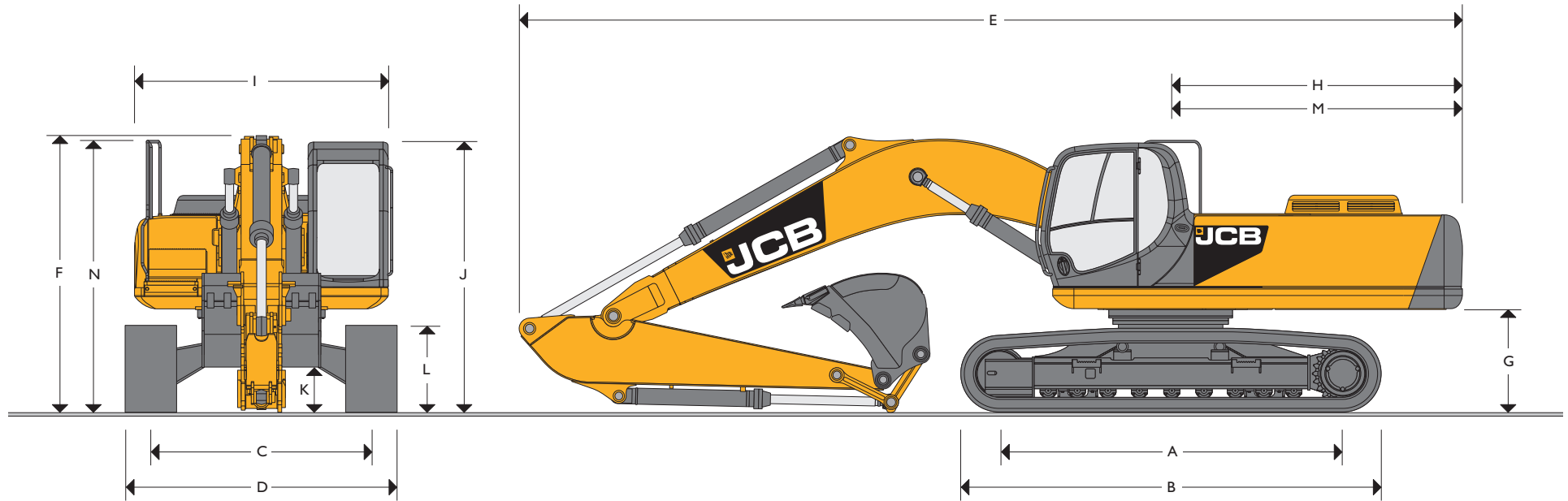




MAX OPERATING WEIGHT: 38372kg (84,596lb)



STATIC DIMENSIONS – JS360 LC/NLC MONOBOOM

Dimensions in millimetres (ft-in)	LC	NLC		
A Track length on ground	4021 (13-2)	4021 (13-2)		
B Undercarriage overall length	4954 (16-3)	4954 (16-3)		
C Track gauge	2600 (8-6)	2390 (7-6)		
D Width over tracks (600mm trackshoes)	3200 (10-6)	2990 (9-6)		
D Width over tracks (700mm trackshoes)	3300 (10-10)	3090 (10-1)		
D Width over tracks (800mm trackshoes)	3400 (11-2)	3190 (10-5)		
D Width over tracks (900mm trackshoes)	3500 (11-6)	3290 (10-10)		
Standard Boom 6.45m (21ft 2in)				
Dipper lengths	2.21m (7ft 3in)	2.63m (8ft 8in)	3.23m (10ft 8in)	4.03m (13ft 3in)
Dimensions in millimetres (ft-in)				
E Transport length	11280 (37-0)	11220 (36-9)	11120 (36-5)	11200 (36-8)
F Transport height	3590 (11-9)	3660 (12-0)	3430 (11-4)	3850 (12-8)

Dimensions in millimetres (ft-in)	LC	NLC
G Counterweight clearance	1214 (3-11)	1214 (3-11)
H Tail swing radius	3460 (11-4)	3460 (11-4)
I Overall width of superstructure	2990 (9-10)	2990 (9-10)
J Height over cab	3202 (10-6)	3202 (10-6)
K Ground clearance	530 (1-8)	530 (1-8)
L Track height	1024 (3-4)	1024 (3-4)
M Tail length	3431 (11-3)	3431 (11-3)
N Height over grab rail	3220 (10-6)	3220 (10-6)
ME Boom 6.1m (20ft)		
Dipper lengths	2.21m (7ft 3in)	2.63m (8ft 8in)
Dimensions in millimetres (ft-in)		
E Transport length	11120 (36-5)	11200 (36-8)
F Transport height	3430 (11-4)	3850 (12-8)



ENGINE

Model	Isuzu AH – 6HK1X Tier 3.
Type	Water cooled, 4-stroke, 6-cylinder in-line, common rail direct injection, turbocharged and intercooled diesel.
Net power (SAE J1349 and 80/1269/EEC)	202kW (271 hp) at 2000rpm.
Gross power	210kW (281 hp) at 1900rpm.
Piston displacement	7.8 litres (475 cu.in.)
Bore/stroke	115mm x 125mm (4.5in. x 4.9in.)
Air filtration	Dry element with secondary safety element and in-cab warning indicator.
Starting system	24 volt.
Batteries	2 x 12 volt.
Alternator	24V, 50 ampere.

SWING SYSTEM

Swing motor	Axial piston type.
Swing brake	Hydraulic braking plus automatic spring applied disc type parking brake.
Final drive	Planetary reduction.
Swing speed	9.1 rpm
Swing gear	Large diameter, internally toothed fully sealed grease bath lubricated.

UNDERCARRIAGE

Carriage options	L-Long Carriage and NL-Narrow Long Carriage.
Construction	Fully welded, 'X' frame type with central bellyguarding and sloping sidemembers with dirt relief holes under top rollers.
Recovery point	Front and rear.
Track shoe options	600mm (24in), 700mm (28in), 800mm (32in), 900mm (34in).
Upper & lower rollers	Heat treated, sealed and lubricated.
Track adjustment	Grease cylinder type.
Track idler	Sealed and lubricated, with spring cushioned recoil.
Track type	Sealed and lubricated.
	NL & L
No. of track guides	2 per side
No. of lower rollers	9 per side
No. of upper rollers	2 per side
No. of track shoes	48 per side

HYDRAULIC SYSTEM

A variable flow load sensing system with flow on demand, variable power output and servo operated, multi-function open centre control.

Pumps

Main pumps	2 variable displacement axial piston type.
Maximum flow	2 x 310 L/min (2 x 64 UK GPM).
Servo pump	Gear type.
Maximum flow	30 L/min (6.6 UK GPM).

Control valve

A combined four and five spool control valve with auxiliary service spool as standard. When required twin pump flow is combined to boom, dipper and bucket services for greater speed and efficiency.

Relief valve settings

Boom/Arm/Bucket	319 bar (4627lbf/sq.in)
With power boost	348 bar (5047lbf/sq.in)
Swing circuit	284 bar (4120lbf/sq.in)
Travel circuit	343 bar (4974lbf/sq.in)
Pilot control	45 bar (652lbf/sq.in)

Hydraulic cylinders

Double acting type, with bolt-up end caps and hardened steel bearing bushes. End cushioning is fitted as standard on boom, dipper and bucket rams.

Filtration

The hydraulic components are protected by the highest standard of filtration to ensure long hydraulic fluid and component life.

In tank	150 micron, suction strainer.
Main return line	10 micron, paper element.
Plexus bypass line	1.5 micron, paper element.
Pilot line	10 micron, paper element.
Hydraulic hammer return	10 micron, reinforced microform element.

Cooling

Worldwide cooling is provided via a single faced full return line air blast cooler with anti-block wavy cooling fins.

TRACK DRIVE

Type	Fully hydrostatic, three speed with autoshift.
Travel motors	Variable swash axial piston type, fully guarded within undercarriage frame.
Final drive	Planetary reduction, bolt-on sprockets.
Service brake	Hydraulic counter balance valve to prevent overspeeding on gradients.
Park brake	Disc type, spring applied, automatic hydraulic release.
Gradeability	70% (35 deg) continuous.
Travel speed	High – 5.46 km/h (3.4 mph). Mid – 3.09 km/h (1.9 mph). Low – 2.5 km/h (1.5 mph).
Tractive effort	293kN (29877kgf, 65869lbf).



EXCAVATOR END – JS360 LC/NLC MONOBOOM

6.45m Monoboom available along with a choice of dipper lengths to suit the requirements of reach, dig-depth, loadover height and tearouts. Reserve strength is built into the fully welded structures for hydraulic hammer and other arduous operations. Fabricated bucket tipping links are provided with a choice of lift points.

EXCAVATOR END – JS360 LC/NLC ME

6.1m monoboom combined with short dipper options gives optimised lift performance maximising bucket capacity. For bulk digging applications.

CAB

Excellent digging, loading and positioning visibility results from the careful design of front, side and roof lights. All screens are tinted to improve in cab conditions.

Fully opening front screen is very smooth to operate and as the lower screen is stored in rear of cab.

Fresh air ventilation available from opening door window, opening slot in front screen and fully opening front screen.

Parallelogram wash wiper for upper screen ensuring good wiped area for maximum visibility. Wiper motor is fitted in the left hand side of the roof screen so as not to affect bucket visibility when loading. Optional lower screen wiper available.

Fresh air ventilation and heater with windscreen demister. Infinitely variable blower speed, temperature and recirculation control.

Optional climate control. Fully adjustable deluxe suspension seat with arm rest adjustment and backrest recline. Optional radio with digital tuner fitted into the roof lining for maximum protection. Conveniently placed radio mute button incorporated into lower console. 12v power point and mobile phone holder built into the right hand console. Courtesy light can be operated from ground level and is illuminated for five minutes or until switched off improving operator access at night. Cab mounted roller blind protects operator from suns' glare through front or top screens.

AMS – ADVANCED MANAGEMENT SYSTEM

Four selectable working modes link the operators control movements with the engine and hydraulic systems to maximise productivity and efficiency.

A (Auto)

Up to 100% engine power and 100% flow. Gives variable power and speed depending on the operator's input, matching the demand for output and efficiency to the job. Power boost is automatically activated in this mode should hard conditions be encountered. Auto idle cuts in after a period of inactivity (between 5 and 30 seconds as set by the operator)

E (Economy)

80% engine power. 95% of hydraulic flow maximises economy while maintaining excellent output.

P (Precision)

55% engine power. 90% of hydraulic flow for fine control of grading operations.

L (Lifting)

55% engine power. 68% of hydraulic flow with permanent power boost for maximum lifting power and control.

The Auto mode allows the AMS processor to select the optimum operational performance to match the demands of the job while the three alternative modes give precise matching of application when specific tasks are undertaken.

The adjustable position monitor mounted on the front right hand pillar of the cab gives the operator a constant read out of mode, tracking range, operating temperature and a host of other information, while retaining excellent visibility of the monitor and the job being carried out.

The required flow for hammer applications can be set and stored in the AMS memory and is automatically activated whenever the hammer pedal is depressed.

A maintenance indicator warns of imminent service needs, and all servicing and basic checks can be carried out using only the in cab display.

CONTROLS

Excavator

All servo lever operated to ISO control pattern, independently adjustable to the seat.

Tracks

Individually servo operated by foot pedal or hand lever.

Speed selection via joystick button.

Auxiliary

Via servo operated foot pedal.

Control isolation

Via gate lock lever at cab entrance or panel switch.

Engine speed

Dial type throttle control plus servo lever mounted one-touch idle control or separate selectable auto-idle with adjustable time delay using AMS.

Engine stop

Ignition key operated and separate shut-down button.

Horn

Operated via servo lever mounted button.



SERVICE CAPACITIES

	Litres	UK gal
Fuel tank	567	147.4
Engine coolant	38.0	8.4
Engine oil	38.0	8.4
Swing reduction gear	14.5	3.19
track reduction gear (each side)	8.5	1.87
Hydraulic system	370	81.5
Hydraulic tank	183	40.2

STANDARD EXCAVATING BUCKETS

Standard excavating buckets are fully welded, heavy duty steel with hardened and sealed pivot pins.

Mono Boom length: 6.45m (21ft 2in)										
Bucket width	mm	900	1000	1200	1350	1500	1600	1800	1750	1750
	in	35	39	47	53	59	63	71	70	70
Bucket capacity	m ³	0.85	0.98	1.245	1.45	1.49	1.61	1.845	2.2	2.34
	yd ³	1.11	1.28	1.63	1.9	1.95	2.1	2.41	2.88	3.06
Bucket weight	kg	921	974	1107	1228	1252	1304	1420	1790	1850
	lb	2030	2147	2441	2707	2760	2875	3131	3946	4079
Dipper length										
2.21m (7ft 3in)		○	○	○	○	○	○	○	●	●
2.63m (8ft 8in)		○	○	○	○	○	○	○	●	■
3.23m (10ft 7in)		○	○	○	○	○	○	●	■	■
4.03m (13ft 3in)		○	○	○	○	○	●	■	×	×
ME Boom length: 6.1 m (20ft 0in)										
Bucket width	mm	1800			1750			1750		
	in	71			70			70		
Bucket capacity	m ³	1.845			2.2			2.34		
	yd ³	2.41			2.88			3.06		
Bucket weight	kg	1420			1790			1850		
	lb	3131			3946			4079		
Dipper length										
2.21m (7ft 3in)		○			●			●		
2.63m (8ft 8in)		○			■			■		

○ Material weight up to 1800kg/m³ (1.35t/yd³)

● Material weight up to 1500kg/m³ (1.1t/yd³)

■ Material weight up to 1200kg/m³ (0.90t/yd³)

× Not recommended

These recommendations are given as a guide based on typical operating conditions.

Please contact your distributor for the correct selection of buckets and attachments to suit the application.

WEIGHTS AND GROUND BEARING PRESSURES

Figures include 1.8cu.m. (2.35cu.yd.) bucket, operator, full fuel tank, and 3.23m (10ft 7in) dipper.

	600mm shoes	700mm shoes	800mm shoes	900mm shoes	
JS360NLC Monoboom					
Machine weight	kg (lb)	36522 (80517)	36967 (81498)	37412 (82479)	37857 (83460)
Ground bearing pressure	kg/cm ² (lb/in ²)	0.71 (10.1)	0.62 (8.8)	0.54 (7.75)	0.48 (7.0)
JS360LC Monoboom					
Machine weight	kg (lb)	36681 (80867)	37126 (81848)	37571 (82829)	38016 (83810)
Ground bearing pressure	kg/cm ² (lb/in ²)	0.71 (10.1)	0.62 (8.8)	0.55 (7.78)	0.49 (7.0)

STANDARD / OPTIONAL EQUIPMENT

Standard Equipment: Engine fan guard; Cold start pre-heat; Auto engine warm up; Double element air cleaner; Electric refuelling pump; Heavy-duty alternator; Electrics isolator; Heavy-duty batteries; Cab & engine soundproofing; Cab heater & screen demister; Tinted glass; Interior light; Coat hook; Cigarette lighter; Ashtray; Climate control; Operator's storage shelf; Removable floor mat; Windscreen wash/wipe; Plug-in power socket; Automatic power boost; Auto-idle; One-touch engine speed control; Hydraulic cushion control; Boom/swing priority switch; Plexus hydraulic oil filtration; HSP pressure test points; Auxiliary pipework mounting brackets; Work lights – boom & mainframe mounted; Undercarriage belly guarding; Upper structure under covers; Swing system cover; Twin track guides; External mirrors; Handrail & non-slip walk ways; Quick connect engine oil drain pipe; Front screen blind; Quick connect fuel tank drain pipe; Hinged engine under cover.

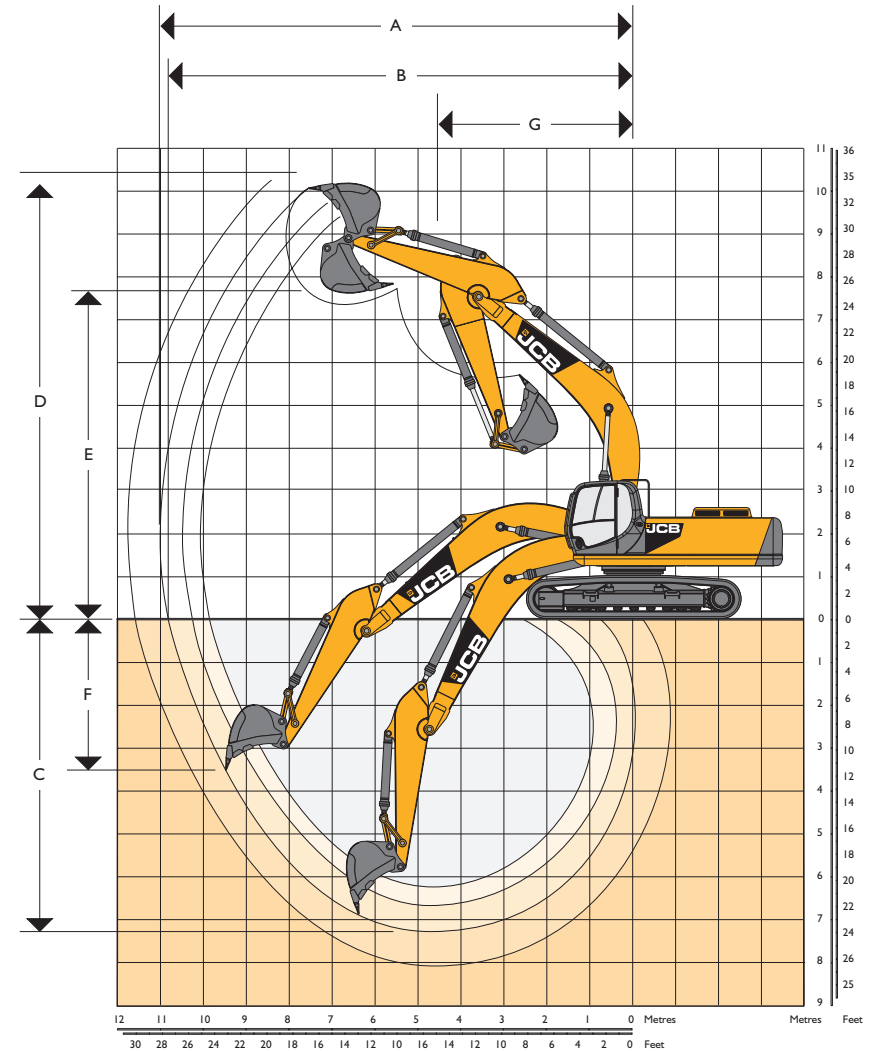
Optional Equipment: Hose burst check valves & overload warning system; Tipping link mounted lift points; General purpose buckets; Ditch/grading buckets; Quickhitch buckets; Hydraulic hammers; Auxiliary pipework (full and low flow); Cab mounted & rear work lights; Rotating beacon; Rain guard; Biodegradeable oil; Air suspension seat with heated pad and lumbar support adjustment; lower screen wiper; Radio; Cab protection guarding (FOPS level II), full length track guides.

STANDARD EQUIPMENT FOR XTRA DUTY BUILDS

Cab cage (FOPS level II); Visibowl pre-cleaner; Reinforced dipper; Reinforced bucket links; Impact buffer around upper structure; Heavy-duty 10mm underguards and trackmotor covers; Reinforced front light protection.

WORKING RANGE – JS360 LC/NLC MONOBOOM

Standard Boom – Boom length: 6.45m (21ft 2in)			
Dipper length		2.21m (7ft 3in)	2.63m (8ft 8in)
A	Maximum digging reach	mm (ft-in)	10060 (33-0) / 10460 (34-4)
B	Maximum reach on ground	mm (ft-in)	9850 (32-4) / 10255 (33-8)
C	Maximum digging depth	mm (ft-in)	6250 (20-6) / 6680 (21-11)
D	Maximum digging height	mm (ft-in)	9510 (31-3) / 9730 (31-11)
E	Maximum dumping height	mm (ft-in)	6800 (22-4) / 7000 (23-0)
F	Maximum vertical cut depth	mm (ft-in)	2390 (7-10) / 2910 (9-6)
G	Minimum swing radius	mm (ft-in)	4740 (15-7) / 4710 (15-6)
	Bucket rotation		185° / 185°
	Dipper tearout with boost	kgf (lbf)	24940 (54983) / 21770 (47995)
	Bucket tearout with boost	kgf (lbf)	27350 (60296) / 27350 (60296)
Standard Boom – Boom length: 6.45m (21ft 2in)			
Dipper length		3.23m (10ft 7in)	4.03m (13ft 3in)
A	Maximum digging reach	mm (ft-in)	11020 (36-0) / 11760 (38-6)
B	Maximum reach on ground	mm (ft-in)	10820 (35-6) / 11570 (38-0)
C	Maximum digging depth	mm (ft-in)	7270 (23-10) / 8070 (26-6)
D	Maximum digging height	mm (ft-in)	10020 (32-11) / 10220 (33-6)
E	Maximum dumping height	mm (ft-in)	7260 (23-10) / 7570 (24-10)
F	Maximum vertical cut depth	mm (ft-in)	3580 (11-9) / 4390 (14-4)
G	Minimum swing radius	mm (ft-in)	4570 (14-5) / 4620 (15-2)
	Bucket rotation		185° / 185°
	Dipper tearout with boost	kgf (lbf)	18060 (39815) / 15500 (34171)
	Bucket tearout with boost	kgf (lbf)	27350 (60296) / 27350 (60296)
ME Boom – Boom length: 6.10m (20ft 0in)			
Dipper length		2.21m (7ft 3in)	2.63m (8ft 8in)
A	Maximum digging reach	9782mm (32ft 1in)	10190mm (33ft 5in)
B	Maximum reach on ground	9566mm (31ft 5in)	9984mm (32ft 9in)
C	Maximum digging depth	5960mm (19ft 7in)	6387mm (20ft 11in)
D	Maximum digging height	9450mm (31ft 0in)	9722mm (31ft 11in)
E	Maximum dumping height	6662mm (21ft 10in)	6898mm (22ft 8in)
F	Maximum vertical cut depth	3097mm (10ft 2in)	3690mm (12ft 1in)
G	Minimum swing radius	4350mm (14ft 3in)	4347mm (14ft 3in)
	Bucket rotation		184.5° / 184.5°
	Dipper tearout with boost	kgf (lbf)	20284 (44719) / 17765 (39165)
	Bucket tearout with boost	kgf (lbf)	19500 (43000) / 19500 (43000)



LIFT CAPACITIES – Dipper length: 2.21m, Boom: 6.45m, Trackshoes: 600mm triple grouser.
JS360 LC MONO

Load Point	Reach from Swing Centre														
	1.5m (4ft 11in)		3m (9ft 10in)		4.5m (14ft 9in)		6m (19ft 8in)		7.5m (24ft 7in)		9m (29ft 6in)		Max. Reach		
															mm
Ht.	kg	kg	kg	kg	kg	kg	kg	kg	kg	kg	kg	kg	kg	kg	mm
7.5m (24.7ft)							9990*	9990*					9920*	9240	6498
6m (19.8ft)							10380*	10340	9540*	7210			9530*	7170	7523
4.5m (14.9ft)					15020*	15020*	11460*	9840	9810*	7040			9380	6170	8146
3m (9.10ft)							12710*	9280	10350*	6780			8690	5680	8457
1.5m (4.11ft)							13580*	8850	10170	6550			8490	5520	8492
0m					18080*	13050	13740*	8630	10020	6410			8760	5660	8253
- 1.5m (- 4.11ft)					16750*	13130	13080*	8610	10020	6410			9650	6200	7715
- 3m (- 9.10ft)			17020*	17020*	14420*	13370	11310*	8770					9510	7450	6806
- 4.5m (- 14.9ft)					10100*	10100*							8330*	8330*	5334
- 6m (- 19.8ft)															

LIFT CAPACITIES – Dipper length: 2.63m, Boom: 6.45m, Trackshoes: 600mm triple grouser.
JS360 LC MONO

Load Point	Reach from Swing Centre															
	1.5m (4ft 11in)		3m (9ft 10in)		4.5m (14ft 9in)		6m (19ft 8in)		7.5m (24ft 7in)		9m (29ft 6in)		Max. Reach			
															mm	
Ht.	kg	kg	kg	kg	kg	kg	kg	kg	kg	kg	kg	kg	kg	kg	mm	
7.5m (24.7ft)														9170*	8240	7006
6m (19.8ft)							9810*	9810*	9000*	7300			8910*	6570	7965	
4.5m (14.9ft)					14080*	14080*	10960*	9950	9420*	7090			8700	5730	8555	
3m (9.10ft)					17070*	14020	12300*	9370	10050*	6800			8100	5290	8852	
1.5m (4.11ft)							13340*	8890	10170	6540			7920	5150	8884	
0m					18460*	13000	13710*	8620	9980	6370			8140	5260	8657	
- 1.5m (- 4.11ft)			14240*	14240*	17380*	13020	13300*	8540	9930	6320			8860	5690	8146	
- 3m (- 9.10ft)			19260*	19260*	15330*	13210	11900*	8650					9200*	6690	7292	
- 4.5m (- 14.9ft)					11640*	11640*							8530*	8530*	5945	
- 6m (- 19.8ft)																

Lift capacity front and rear.

Lift capacity full circle.

- Notes:**
1. The above loads are in compliance with SAE and ISO Hydraulic Excavator Lift Capacity Standards.
 2. They do not exceed 87% of hydraulic lifting capacity or 75% of tipping load.
 3. Rated loads marked with an asterisk (*) are limited by hydraulic capacity rather than tipping load.

LIFT CAPACITIES – Dipper length: 3.23m, Boom: 6.45m, Trackshoes: 600mm triple grouser.
JS360 LC MONO

Load Point	Reach from Swing Centre														
	1.5m (4ft 11in)		3m (9ft 10in)		4.5m (14ft 9in)		6m (19ft 8in)		7.5m (24ft 7in)		9m (29ft 6in)		Max. Reach		
															mm
Ht.	kg	kg	kg	kg	kg	kg	kg	kg	kg	kg	kg	kg	kg	kg	mm
7.5m (24.7ft)									7870*	7480			6630*	6630	7704
6m (19.8ft)									8290*	7400			6410*	5850	8584
4.5m (14.9ft)							10170*	10120	8840*	7150	7610*	5300	6430*	5160	9134
3m (9.10ft)					15790*	14430	11620*	9500	9570*	6840	7910	5160	6660*	4800	9412
1.5m (4.11ft)					17960*	13410	12860*	8950	10180	6540	7740	5010	7120*	4660	9443
0m					18540*	12960	13520*	8600	9940	6320	7620	4900	7360	4740	9229
- 1.5m (- 4.11ft)			14080*	14080*	17940*	12860	13440*	8450	9820	6220			7900	5070	8753
- 3m (- 9.10ft)			21920*	21920*	16340*	12980	12480*	8480	9590*	6260			8680*	5810	7965
- 4.5m (- 14.9ft)			17390*	17390*	13390*	13310	10140*	8710					8430*	7450	6757
- 6m (- 19.8ft)															

LIFT CAPACITIES – Dipper length: 4.03m, Boom: 6.45m, Trackshoes: 600mm triple grouser.
JS360 LC MONO

Load Point	Reach from Swing Centre														
	1.5m (4ft 11in)		3m (9ft 10in)		4.5m (14ft 9in)		6m (19ft 8in)		7.5m (24ft 7in)		9m (29ft 6in)		Max. Reach		
															mm
Ht.	kg	kg	kg	kg	kg	kg	kg	kg	kg	kg	kg	kg	kg	kg	mm
9m (29.6ft)													5570*	5570*	7419
7.5m (24.7ft)													5160*	5160*	8601
6m (19.8ft)									7350*	7350*	6770*	5470	5010*	5010*	9396
4.5m (14.9ft)									7980*	7240	7380*	5340	5020*	4490	9900
3m (9.10ft)					13900*	13900*	10540*	9660	8810*	6880	7790*	5150	5170*	4190	10157
1.5m (4.11ft)					16630*	13630	12000*	9000	9630*	6520	7690	4950	5490*	4070	10185
0m			8770*	8770*	18020*	12880	12990*	8530	9860	6230	7510	4780	5990*	4100	9988
- 1.5m (- 4.11ft)	8670*	8670*	13160*	13160*	18120*	12580	13310*	8260	9660	6050	7410	4690	6830	4330	9549
- 3m (- 9.10ft)	13590*	13590*	18910*	18910*	17150*	12570	12850*	8200	9610	6010			7640	4840	8835
- 4.5m (- 14.9ft)	19430*	19430*	20660*	20660*	15010*	12790	11370*	8320	8490*	6150			7930*	5890	7766
- 6m (- 19.8ft)			14590*	14590*	10990*	10990*	7800*	7800*					7420*	7420*	6156

Lift capacity front and rear.

Lift capacity full circle.

- Notes:**
1. The above loads are in compliance with SAE and ISO Hydraulic Excavator Lift Capacity Standards.
 2. They do not exceed 87% of hydraulic lifting capacity or 75% of tipping load.
 3. Rated loads marked with an asterisk (*) are limited by hydraulic capacity rather than tipping load.

LIFT CAPACITIES – Dipper length: 2.21m, Boom: 6.45m, Trackshoes: 600mm triple grouser.
JS360 NLC MONO

Load Point	Reach from Swing Centre														
	1.5m (4ft 11in)		3m (9ft 10in)		4.5m (14ft 9in)		6m (19ft 8in)		7.5m (24ft 7in)		9m (29ft 6in)		Max. Reach		
															mm
Ht.	kg	kg	kg	kg	kg	kg	kg	kg	kg	kg	kg	kg	kg	kg	mm
7.5m (24.7ft)							9990*	9740					9920*	8490	6498
6m (19.8ft)							10380*	9500	9540*	6620			9530*	6590	7523
4.5m (14.9ft)					15020*	13630	11460*	9000	9810*	6460			9360	5660	8146
3m (9.10ft)							12710*	8450	10350*	6200			8660	5190	8457
1.5m (4.11ft)							13580*	8030	10140	5970			8470	5030	8492
0m					18080*	11720	13740*	7820	9990	5830			8740	5160	8253
- 1.5m (- 4.11ft)					16750*	11790	13080*	7800	10000	5840			9620	5640	7715
- 3m (- 9.10ft)			17020*	17020*	14420*	12020	11310*	7960					9510*	6790	6806
- 4.5m (- 14.9ft)					10100*	10100*							8330*	8330*	5334
- 6m (- 19.8ft)															

LIFT CAPACITIES – Dipper length: 2.63m, Boom: 6.45m, Trackshoes: 600mm triple grouser.
JS360 NLC MONO

Load Point	Reach from Swing Centre															
	1.5m (4ft 11in)		3m (9ft 10in)		4.5m (14ft 9in)		6m (19ft 8in)		7.5m (24ft 7in)		9m (29ft 6in)		Max. Reach			
															mm	
Ht.	kg	kg	kg	kg	kg	kg	kg	kg	kg	kg	kg	kg	kg	kg	mm	
7.5m (24.7ft)														9170*	7580	7006
6m (19.8ft)							9810*	9610	9000*	6700			8910*	6040	7965	
4.5m (14.9ft)					14080*	13690	10960*	9110	9420*	6500			8680	5240	8555	
3m (9.10ft)					17070*	12650	12300*	8540	10050*	6220			8080	4840	8852	
1.5m (4.11ft)							13340*	8080	10150	5960			7900	4690	8884	
0m					18460*	11670	13710*	7810	9960	5790			8120	4790	8657	
- 1.5m (- 4.11ft)			14240*	14240*	17380*	11690	13300*	7740	9900	5750			8840	5180	8146	
- 3m (- 9.10ft)			19260*	19260*	15330*	11870	11900*	7840					9200*	6090	7292	
- 4.5m (- 14.9ft)					11640*	11640*							8530*	8310	5945	
- 6m (- 19.8ft)																

Lift capacity front and rear.

Lift capacity full circle.

- Notes:**
1. The above loads are in compliance with SAE and ISO Hydraulic Excavator Lift Capacity Standards.
 2. They do not exceed 87% of hydraulic lifting capacity or 75% of tipping load.
 3. Rated loads marked with an asterisk (*) are limited by hydraulic capacity rather than tipping load.

LIFT CAPACITIES – Dipper length: 3.23m, Boom: 6.45m, Trackshoes: 600mm triple grouser.
JS360 NLC MONO

Load Point	Reach from Swing Centre														Max. Reach	
	1.5m (4ft 11in)		3m (9ft 10in)		4.5m (14ft 9in)		6m (19ft 8in)		7.5m (24ft 7in)		9m (29ft 6in)					
Ht.	kg	kg	kg	kg	kg	kg	kg	kg	kg	kg	kg	kg	kg	kg	mm	
7.5m (24.7ft)										7870*	6880			6630*	6540	7704
6m (19.8ft)										8290*	6810			6410*	5370	8584
4.5m (14.9ft)							10170*	9270	8840*	6560	7610*	4850	6430*	4720	9134	
3m (9.10ft)					15790*	13050	11620*	8660	9570*	6250	7880	4710	6660*	4380	9412	
1.5m (4.11ft)					17960*	12060	12860*	8130	10160	5960	7720	4570	7120*	4240	9443	
0m					18540*	11620	13520*	7790	9910	5740	7600	4460	7340	4310	9229	
- 1.5m (- 4.11ft)			14080*	14080*	17940*	11530	13440*	7640	9800	5640			7880	4610	8753	
- 3m (- 9.10ft)			21920*	21920*	16340*	11640	12480*	7670	9590*	5680			8680*	5280	7965	
- 4.5m (- 14.9ft)			17390*	17390*	13390*	11960	10140*	7900					8430*	6780	6757	
- 6m (- 19.8ft)																

LIFT CAPACITIES – Dipper length: 4.03m, Boom: 6.45m, Trackshoes: 600mm triple grouser.
JS360 NLC MONO

Load Point	Reach from Swing Centre														Max. Reach	
	1.5m (4ft 11in)		3m (9ft 10in)		4.5m (14ft 9in)		6m (19ft 8in)		7.5m (24ft 7in)		9m (29ft 6in)					
Ht.	kg	kg	kg	kg	kg	kg	kg	kg	kg	kg	kg	kg	kg	kg	mm	
9m (29.6ft)														5570*	5570*	7419
7.5m (24.7ft)														5160*	5160*	8601
6m (19.8ft)									7350*	6930	6770*	5010	5010*	4610	9396	
4.5m (14.9ft)									7980*	6650	7380*	4890	5020*	4100	9900	
3m (9.10ft)					13900*	13530	10540*	8820	8810*	6290	7790*	4700	5170*	3810	10157	
1.5m (4.11ft)					16630*	12270	12000*	8180	9630*	5930	7670	4500	5490*	3690	10185	
0m			8770*	8770*	18020*	11540	12990*	7710	9830	5650	7490	4340	5990*	3720	9988	
- 1.5m (- 4.11ft)	8670*	8670*	13160*	13160*	18120*	11250	13310*	7450	9630	5470	7390	4250	6810	3920	9549	
- 3m (- 9.10ft)	13590*	13590*	18910*	18910*	17150*	11240	12850*	7390	9590	5430			7620	4390	8835	
- 4.5m (- 14.9ft)	19430*	19430*	20660*	20660*	15010*	11460	11370*	7510	8490*	5570			7930*	5340	7766	
- 6m (- 19.8ft)			14590*	14590*	10990*	10990*	7800*	7800*					7420*	7420*	6156	

Lift capacity front and rear.
 Lift capacity full circle.

Notes: 1. The above loads are in compliance with SAE and ISO Hydraulic Excavator Lift Capacity Standards.
 2. They do not exceed 87% of hydraulic lifting capacity or 75% of tipping load.
 3. Rated loads marked with an asterisk (*) are limited by hydraulic capacity rather than tipping load.

LIFT CAPACITIES – Dipper length: 2.21m, Boom: 6.1m, Trackshoes: 600mm triple grouser.
JS360 LC ME

Load Point	Reach from Swing Centre														
	1.5m (4ft 11in)		3m (9ft 10in)		4.5m (14ft 9in)		6m (19ft 8in)		7.5m (24ft 7in)		9m (29ft 6in)		Max. Reach		
Ht.	kg	kg	kg	kg	kg	kg	kg	kg	kg	kg	kg	kg	kg	kg	mm
7.5m (24.7ft)							10720*	10540					10730*	10310	6075
6m (19.8ft)							10770*	10430					10200*	7800	7163
4.5m (14.9ft)					14930*	14930*	11720*	9990	10200*	7110			10030*		
3m (9.10ft)							12910*	9470	10540	6890					
1.5m (4.11ft)							13780*	9050	10310	6670					
0m					18550*	13300*	13930	8830	10170	6550					
- 1.5m (- 4.11ft)			18720*	18720*	17070*	13360	13140*	8800							
- 3m (- 9.10ft)			17380*	17380*	14300*	13610	10850*	9000							
- 4.5m (- 14.9ft)															
- 6m (- 19.8ft)															

LIFT CAPACITIES – Dipper length: 2.63m, Boom: 6.45m, Trackshoes: 600mm triple grouser.
JS360 LC ME

Load Point	Reach from Swing Centre															
	1.5m (4ft 11in)		3m (9ft 10in)		4.5m (14ft 9in)		6m (19ft 8in)		7.5m (24ft 7in)		9m (29ft 6in)		Max. Reach			
Ht.	kg	kg	kg	kg	kg	kg	kg	kg	kg	kg	kg	kg	kg	kg	mm	
7.5m (24.7ft)														9170*	7580	7006
6m (19.8ft)							9810*	9610	9000*	6700			8910*	6040	7965	
4.5m (14.9ft)					14080*	13690	10960*	9110	9420*	6500			8680	5240	8555	
3m (9.10ft)					17070*	12650	12300*	8540	10050*	6220			8080	4840	8852	
1.5m (4.11ft)							13340*	8080	10150	5960			7900	4690	8884	
0m					18460*	11670	13710*	7810	9960	5790			8120	4790	8657	
- 1.5m (- 4.11ft)			14240*	14240*	17380*	11690	13300*	7740	9900	5750			8840	5180	8146	
- 3m (- 9.10ft)			19260*	19260*	15330*	11870	11900*	7840					9200*	6090	7292	
- 4.5m (- 14.9ft)					11640*	11640*							8530*	8310	5945	
- 6m (- 19.8ft)																

Lift capacity front and rear.

Lift capacity full circle.

- Notes:**
1. The above loads are in compliance with SAE and ISO Hydraulic Excavator Lift Capacity Standards.
 2. They do not exceed 87% of hydraulic lifting capacity or 75% of tipping load.
 3. Rated loads marked with an asterisk (*) are limited by hydraulic capacity rather than tipping load.

LIFT CAPACITIES – Dipper length: 3.23m, Boom: 6.45m, Trackshoes: 600mm triple grouser.
JS360 NLC MONO

Load Point	Reach from Swing Centre														Max. Reach	
	1.5m (4ft 11in)		3m (9ft 10in)		4.5m (14ft 9in)		6m (19ft 8in)		7.5m (24ft 7in)		9m (29ft 6in)		kg	kg		
															kg	kg
Ht.	kg	kg	kg	kg	kg	kg	kg	kg	kg	kg	kg	kg	kg	kg	kg	mm
7.5m (24.7ft)										7870*	6880			6630*	6540	7704
6m (19.8ft)										8290*	6810			6410*	5370	8584
4.5m (14.9ft)							10170*	9270	8840*	6560	7610*	4850	6430*	4720	9134	
3m (9.10ft)					15790*	13050	11620*	8660	9570*	6250	7880	4710	6660*	4380	9412	
1.5m (4.11ft)					17960*	12060	12860*	8130	10160	5960	7720	4570	7120*	4240	9443	
0m					18540*	11620	13520*	7790	9910	5740	7600	4460	7340	4310	9229	
- 1.5m (- 4.11ft)			14080*	14080*	17940*	11530	13440*	7640	9800	5640			7880	4610	8753	
- 3m (- 9.10ft)			21920*	21920*	16340*	11640	12480*	7670	9590*	5680			8680*	5280	7965	
- 4.5m (- 14.9ft)			17390*	17390*	13390*	11960	10140*	7900					8430*	6780	6757	
- 6m (- 19.8ft)																

LIFT CAPACITIES – Dipper length: 4.03m, Boom: 6.45m, Trackshoes: 600mm triple grouser.
JS360 NLC MONO

Load Point	Reach from Swing Centre														Max. Reach	
	1.5m (4ft 11in)		3m (9ft 10in)		4.5m (14ft 9in)		6m (19ft 8in)		7.5m (24ft 7in)		9m (29ft 6in)		kg	kg		
															kg	kg
Ht.	kg	kg	kg	kg	kg	kg	kg	kg	kg	kg	kg	kg	kg	kg	kg	mm
9m (29.6ft)														5570*	5570*	7419
7.5m (24.7ft)														5160*	5160*	8601
6m (19.8ft)									7350*	6930	6770*	5010	5010*	4610	9396	
4.5m (14.9ft)									7980*	6650	7380*	4890	5020*	4100	9900	
3m (9.10ft)					13900*	13530	10540*	8820	8810*	6290	7790*	4700	5170*	3810	10157	
1.5m (4.11ft)					16630*	12270	12000*	8180	9630*	5930	7670	4500	5490*	3690	10185	
0m			8770*	8770*	18020*	11540	12990*	7710	9830	5650	7490	4340	5990*	3720	9988	
- 1.5m (- 4.11ft)	8670*	8670*	13160*	13160*	18120*	11250	13310*	7450	9630	5470	7390	4250	6810	3920	9549	
- 3m (- 9.10ft)	13590*	13590*	18910*	18910*	17150*	11240	12850*	7390	9590	5430			7620	4390	8835	
- 4.5m (- 14.9ft)	19430*	19430*	20660*	20660*	15010*	11460	11370*	7510	8490*	5570			7930*	5340	7766	
- 6m (- 19.8ft)			14590*	14590*	10990*	10990*	7800*	7800*					7420*	7420*	6156	

Lift capacity front and rear.

Lift capacity full circle.

- Notes:**
1. The above loads are in compliance with SAE and ISO Hydraulic Excavator Lift Capacity Standards.
 2. They do not exceed 87% of hydraulic lifting capacity or 75% of tipping load.
 3. Rated loads marked with an asterisk (*) are limited by hydraulic capacity rather than tipping load.



A GLOBAL COMMITMENT TO QUALITY

JCB's total commitment to its products and customers has helped it grow from a one-man business into Britain's largest privately owned manufacturer of backhoe loaders, crawler excavators, wheeled excavators, telescopic handlers, wheeled loaders, dump trucks, rough terrain fork lifts, industrial fork lifts, mini/midi excavators, skid steer loaders, tractors and compaction equipment.

By making constant and massive investments in the latest production technology, the JCB factories have become some of the most advanced in the world.

By leading the field in innovative research and design, extensive testing and stringent quality control, JCB machines have become renowned all over the world for performance, value and reliability.

And with a global sales and service network of more than 650 dealers and agents, we aim to deliver the best customer support in the industry.

Through setting the standards by which others are judged, JCB has become one of the world's most impressive success stories.

