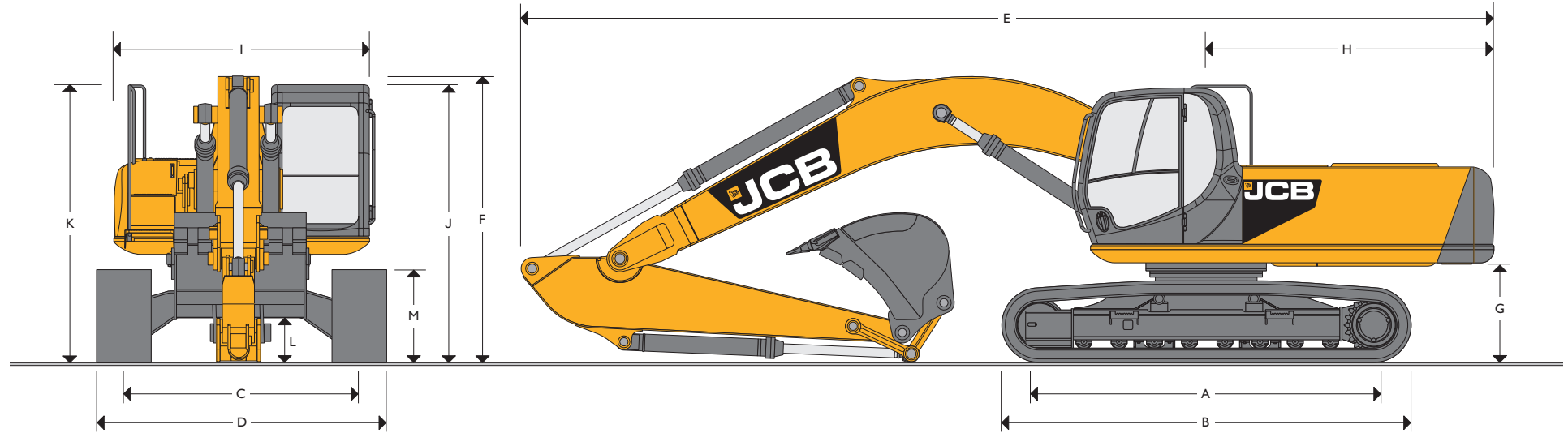




MAX. OPERATING WEIGHT: 27742 kg (61160 lb) ENGINE POWER: 140 kW (188 hp)



STATIC DIMENSIONS – JS260 NLC/SC/LC MONOBOOM

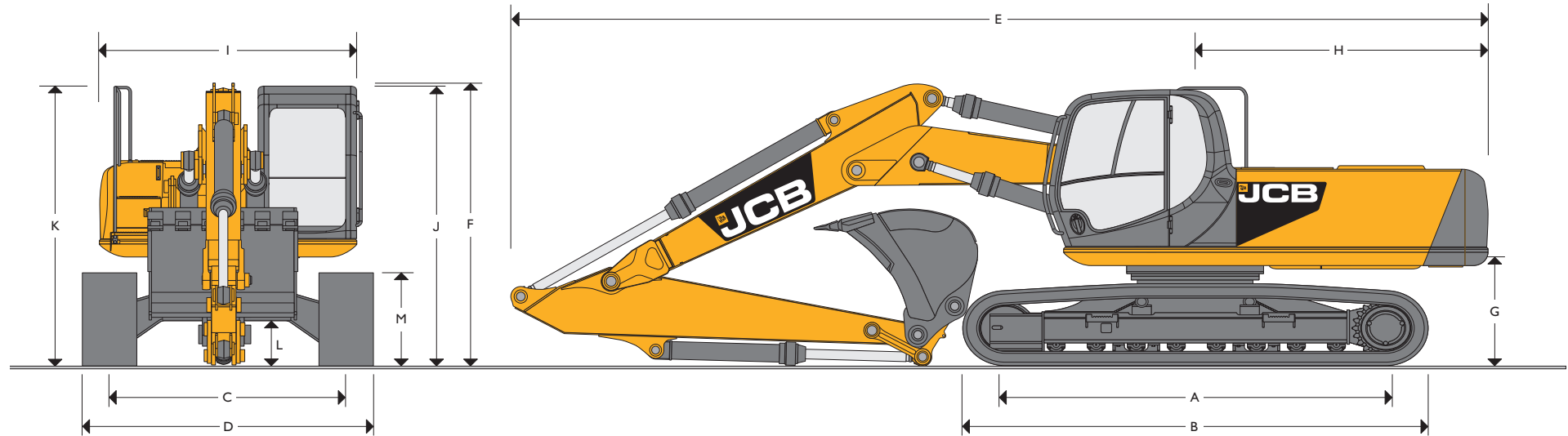
Dimensions in millimetres (ft-in)	NLC	SC	LC
A Track length on ground	3840 (12-7)	3460 (11-4)	3840 (12-7)
B Undercarriage overall length	4640 (15-3)	4260 (14-0)	4640 (15-3)
C Track gauge	2390 (7-10)	2390 (7-10)	2590 (8-6)
D Width over tracks (600 shoes)	2990 (9-10)	2990 (9-10)	3190 (10-6)
D Width over tracks (700 shoes)	3090 (10-2)	3090 (10-2)	3290 (10-9)
D Width over tracks (800 shoes)	3190 (10-6)	3190 (10-6)	3390 (11-1)
D Width over tracks (900 shoes)	3290 (10-9)	3290 (10-9)	3490 (11-5)

Dipper lengths	2.00m (6ft 7in)	2.44m (8ft 0in)	3.09m (10ft 2in)	3.53m (11ft 7in)
Dimensions in mm (ft-in)				
E Transport length with Monoboom	10083 (33-0)	10060 (33-0)	9960 (32-8)	10010 (32-10)
F Transport height with Monoboom	3173 (10-5)	3230 (10-7)	3050 (10-0)	3220 (10-7)

Dimensions in millimetres (ft-in)	
G Counterweight clearance	1125 (3-8)
H Tailswing radius	3000 (9-10)
I Width of superstructure	2500 (8-2)
J Height over cab	2980 (9-10)
K Height over grabrail	3059 (10-0)
L Ground clearance	486 (1-7)
M Track height	940 (3-1)



MAX. OPERATING WEIGHT: 28956 kg (63836 lb) ENGINE POWER: 147 kW (197 hp)



STATIC DIMENSIONS – JS260 NLC/SC/LC T.A.B.

Dimensions in millimetres (ft-in)	NLC	SC	LC
A Track length on ground	3840 (12-7)	3460 (11-4)	3840 (12-7)
B Undercarriage overall length	4640 (15-3)	4260 (14-0)	4640 (15-3)
C Track gauge	2390 (7-10)	2390 (7-10)	2590 (8-6)
D Width over tracks (600 shoes)	2990 (9-10)	2990 (9-10)	3190 (10-6)
D Width over tracks (700 shoes)	3090 (10-2)	3090 (10-2)	3290 (10-9)
D Width over tracks (800 shoes)	3190 (10-6)	3190 (10-6)	3390 (11-1)
D Width over tracks (900 shoes)	3290 (10-9)	3290 (10-9)	3490 (11-5)

Dipper lengths	2.00m (6ft 7in)	2.44m (8ft 0in)	3.09m (10ft 2in)	3.53m (11ft 7in)
E Transport length	10090 (33-1)	10210 (33-6)	10170 (33-4)	10170 (33-4)
F Transport height	3785 (12-5)	3270 (10-9)	3140 (10-4)	3290 (10-10)

Dimensions in millimetres (ft-in)	
G Counterweight clearance	1125 (3-8)
H Tailswing radius	3000 (9-10)
I Width of superstructure	2500 (8-2)
J Height over cab	2980 (9-10)
K Height over grabrail	3059 (10-0)
L Ground clearance	486 (1-7)
M Track height	940 (3-1)



ENGINE

Model	Isuzu 4HK1X European Tier 4i emissions compliant.
Type	Water cooled, 4-stroke, 4-cylinder in-line, direct injection, turbocharged diesel.
Rated power (ISO 14899 (SAE J1995))	140kW (188hp) at 2000rpm.
Piston Displacement	5.193 litres.
Air Filtration	Dry element with secondary safety element and in-cab warning indicator.
Cooling	Water cooled via large capacity radiator.
Starting system	24 volt.
Batteries	2 x 12 volt Heavy duty.
Alternator	24 volt 50 amp.
Refuelling pump	Electric type.

SWING SYSTEM

Swing motor	Axial piston type.
Swing brake	Hydraulic braking plus automatic spring applied disc type parking brake.
Final drive	Planetary reduction.
Swing speed	10.6 rpm.
Swing gear	Large diameter, internally toothed fully sealed grease bath lubricated.
Swing lock	Multi position switchable brake.

UNDERCARRIAGE

Carriage options	SC-Standard, LC-Long Carriage and NLC-Narrow Long Carriage.
Construction	Fully welded, 'X' frame type with central bellyguarding . and sloping sidemembers with dirt relief holes under top rollers.
Recovery point	Front and rear.
Track type	Sealed and lubricated.
Track shoe options	600mm (24in), 700mm (28in), 800mm (31in), 900mm (35in).
Upper & lower rollers	Heat treated, sealed and lubricated.
Track adjustment	Grease cylinder type.
Track idler	Sealed and lubricated, with spring cushioned recoil.

	SC	NLC & LC
No. of track guides	2 per side	2 per side
No. of lower rollers	7 per side	9 per side
No. of upper rollers	2 per side	2 per side
No. of track shoes	47 per side	51 per side

HYDRAULIC SYSTEM

A variable flow load sensing system with flow on demand, variable power output and servo operated, multi-function open centre control.

Pumps

Main pumps	2 variable displacement axial piston type.
Maximum flow	2 x 229 L/min (2 x 50.4 UK GPM).
Servo pump	Gear type.
Maximum flow	20 L/min (4.4 UK GPM).

Control valve

A combined four and five spool control valve with auxiliary service spool as standard. When required twin pump flow is combined to boom, dipper and bucket services for greater speed and efficiency.

Relief valve settings

Boom/Arm/Bucket	343 bar (4975lbf/sq.in)
With power boost	373 bar (5410lbf/sq.in)
Swing circuit	289 bar (4192lbf/sq.in)
Travel circuit	343 bar (4975lbf/sq.in)
Pilot control	40 bar (569lbf/sq.in)

Hydraulic cylinders

Double acting type, with bolt-up end caps and hardened steel bearing bushes. End cushioning is fitted as standard on boom, dipper and bucket rams.

Filtration

The hydraulic components are protected by the highest standard of filtration to ensure long hydraulic fluid and component life.

In tank	150 micron, suction strainer.
Main return line	10 micron, fibreform element.
Plexus bypass line	1.5 micron, paper element.
Pilot line	10 micron, paper element.
Hydraulic hammer return	10 micron, reinforced microform element.

Cooling

Worldwide cooling is provided via a full return line air blast cooler as part of a single face cooling pack, in conjunction with the engine water cooler. Intercooler.

TRACK DRIVE

Type	Fully hydrostatic, three speed with autoshift.
Travel motors	Variable swash axial piston type, fully guarded within undercarriage frame.
Final drive	Planetary reduction, bolt-on sprockets.
Service brake	Hydraulic counter balance valve to prevent overspeeding on gradients.
Park brake	Disc type, spring applied, automatic hydraulic release.
Gradeability	70% (35 deg) continuous.
Travel speed	High – 5.6 km/h (3.4 mph). Mid – 3.3 km/h (2.0 mph). Low – 2.3 km/h (1.4 mph).
Tractive effort	197.1 kN (20098kgf, 44309lbf).



EXCAVATOR END – MONOBOOM

Monoboom available along with a choice of dipper lengths to suit the requirements of reach, dig-depth, loadover height, tearouts and site versatility. Reserve strength is built into the fully welded structures for hydraulic hammer and other arduous operations. Fabricated bucket tipping links are provided with a choice of lift points. Strong, durable construction, large cross sections and multi plate fabrications to withstand high stress applications. The 5.85m (19ft 2in) boom is designed to ensure the optimum digging envelope when matched with the three dipper lengths. Low maintenance bronze alloy bushes with graphite plugs are fitted to boom base and boom to dipper pivots resulting in 1000 hour greasing intervals at these points.

EXCAVATOR END – T.A.B.

Triple articulated boom available along with a choice of dipper lengths to suit the requirements of reach, dig-depth, loadover height, tearouts and site versatility. Reserve strength is built into the fully welded structures for hydraulic hammer and other arduous operations. Fabricated bucket tipping links are provided with a choice of lift points. Strong, durable construction, large cross sections and multi plate fabrications to withstand high stress applications. The boom is designed to ensure the optimum digging envelope when matched with the three dipper lengths.

CAB

Excellent digging, loading and positioning visibility results from the careful design of front, side and roof lights. All screens are tinted to improve in cab conditions. Fully opening front screen is very smooth to operate and the lower screen is stored in rear of cab. Fresh air ventilation available from opening door window, opening slot in front screen and fully opening front screen. Parallelogram wash wiper for upper screen ensuring good wiped area for maximum visibility. Wiper motor is fitted in the left hand side of the roof screen so as not to affect bucket visibility when loading. Optional lower screen wiper available. Fresh air ventilation and heater with windscreen demister. Infinitely variable blower speed, temperature and recirculation control. Optional climate control. Fully adjustable deluxe suspension seat with arm rest adjustment and backrest recline. Radio with digital tuner fitted into the roof lining for maximum protection. Conveniently placed radio mute button incorporated into lower console. 12v power point and mobile phone holder built into the right hand console. Courtesy light can be operated from ground level and is illuminated for five minutes or until switched off improving operator access at night. Cab mounted roller blind protects operator from suns' glare.

AMS – ADVANCED MANAGEMENT SYSTEM

Four selectable working modes link the operators control movements with the engine and hydraulic systems to maximise productivity and efficiency.

A (Auto)	Up to 100% engine power and 100% flow. Gives variable power and speed depending on the operator's input, matching the demand for output and efficiency to the job. Power boost is automatically activated in this mode should hard conditions be encountered. Auto idle cuts in after a period of inactivity (between 5 and 30 seconds as set by the operator)
E (Economy)	80% engine power: 95% of hydraulic flow maximises economy while maintaining excellent output.
P (Precision)	55% engine power: 90% of hydraulic flow for fine control of grading operations.
L (Lifting)	55% engine power: 63% of hydraulic flow with permanent power boost for maximum lifting power and control.

The Auto mode allows the AMS processor to select the optimum operational performance to match the demands of the job while the three alternative modes give precise matching of application when specific tasks are undertaken.

The adjustable position monitor mounted on the front right hand pillar of the cab gives the operator a constant read out of mode, tracking range, operating temperature and a host of other information, while retaining excellent visibility of the monitor and the job being carried out.

The required flow for hammer applications can be set and stored in the AMS memory and is automatically activated whenever the hammer pedal is depressed.

A maintenance indicator warns of imminent service needs, and all servicing and basic checks can be carried out using only the in cab display.

CONTROLS

Excavator Tracks	All servo lever operated to ISO control pattern, independently adjustable to the seat. Individually servo operated by foot pedal or hand lever. Speed selection via joystick button.
Auxiliary Control isolation Engine speed	Via servo operated foot pedal. Via gate lock lever at cab entrance or panel switch. Dial type throttle control plus servo lever mounted one-touch idle control or separate selectable auto-idle with adjustable time delay using AMS.
Engine stop Horn	Ignition key operated and separate shut-down button. Operated via servo lever mounted button.



SERVICE CAPACITIES

	Litres (UK gal)
Fuel tank	343 (75.5)
Engine coolant	31.0 (6.8)
Engine oil	25.9 (5.7)
Swing reduction gear	6.0 (1.3)
Track reduction gear (each side)	4.7 (1.0)
Hydraulic system	241 (53)
Hydraulic tank	120 (26.4)

WEIGHTS AND GROUND BEARING PRESSURES

Figures include 1.14cu.m. bucket, operator and full fuel tank.

JS260 Mono

Undercarriage and shoe width mm (in)	Weight/Ground bearing pressure
NLC 600mm (24)	26095 kg (0.53 kg/sq.cm)
SC 600mm (24)	25539 kg (0.57 kg/sq.cm)
LC 700mm (28)	26446 kg (0.46 kg/sq.cm)

JS260 TAB

Undercarriage and shoe width mm (in)	Weight/Ground bearing pressure
NLC 600mm (24)	27280 kg (0.55 kg/sq.cm)
SC 600mm (24)	26724 kg (0.60 kg/sq.cm)
LC 700mm (28)	27632 kg (0.48 kg/sq.cm)

GENERAL PURPOSE EXCAVATOR BUCKETS

All buckets are JCB – Escó type fully welded steel, with sealed, hardened steel pivot pins and replaceable wear parts.

Max Width	Capacity (SAE heaped)	Weight
900mm (36in.)	0.77cu.m (1.0cu.yd.)	775kg (1709lb)
1100mm (43in.)	1.01cu.m (1.32cu.yd.)	857kg (1890lb)
1200mm (47in.)	1.13cu.m (1.49cu.yd.)	898kg (1980lb)
1500mm (59in.)	1.35cu.m (1.77cu.yd.)	936kg (2064lb)
1600mm (63in.)	1.46cu.m 1.91cu.yd.)	973kg (2145lb)

STANDARD / OPTIONAL EQUIPMENT

Standard Equipment: Engine fan guard; Cold start pre-heat; Auto engine warm up; Double element air cleaner; Electric refuelling pump; Heavy duty alternator; Electrics isolator; Heavy duty batteries; Cab & engine soundproofing; Cab heater & screen demister; Tinted glass; Interior light; Coat hook; Cigarette lighter; Ashtray; Operator's storage shelf; Removable floor mat; Windscreen wash/wipe; Plug-in power socket; Automatic power boost; Auto-idle; One-touch engine speed control; Hydraulic cushion control; Boom/swing priority switch; Plexus hydraulic oil filtration; HSP pressure test points; Auxiliary pipework mounting brackets; Work lights – boom & mainframe mounted; Undercarriage belly guarding; Upper structure under covers; Swing system cover; Twin track guides; External mirrors; Handrail & non slip walk ways; Quick connect engine oil drain pipe; Front screen blind; Quick connect fuel tank drain pipe; Hinged engine under cover; Remote filter system.

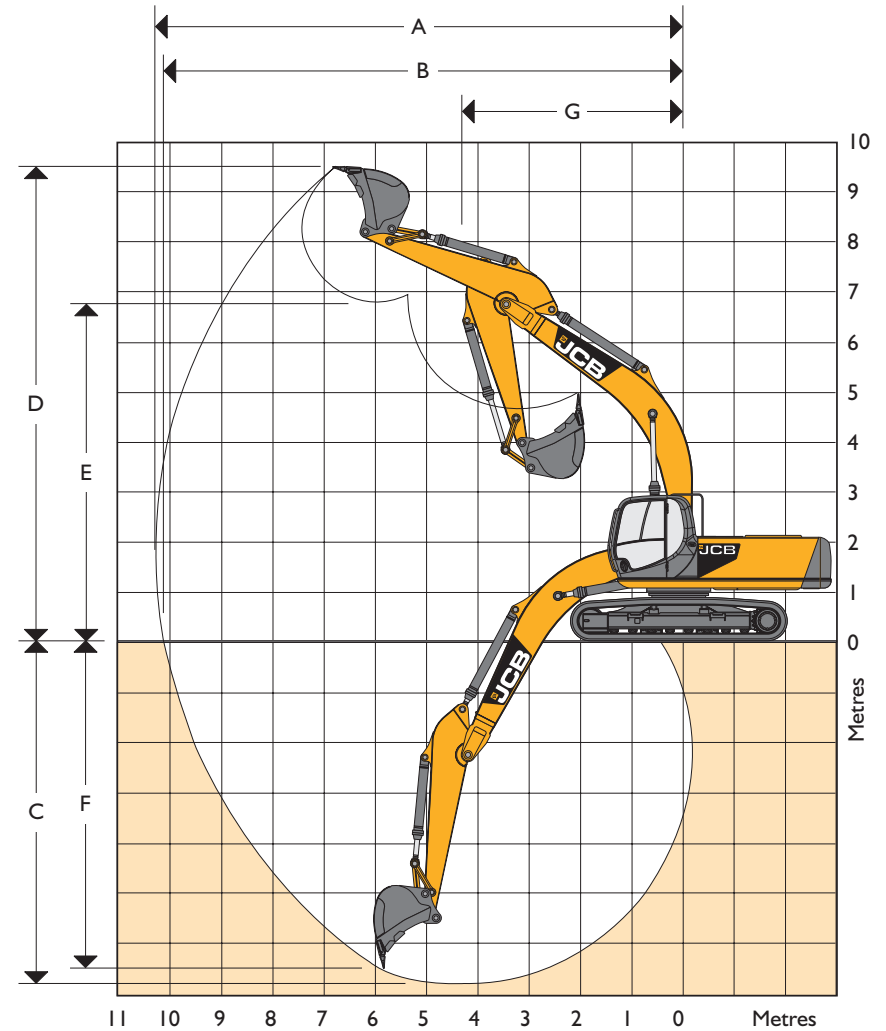
Optional Equipment: Hose burst check valves & overload warning system; Tipping link mounted lift points; General purpose buckets; Ditch/grading buckets; Quickhitch buckets; Hydraulic hammers; Auxiliary pipework (full and low flow); Climate control; Cab mounted & rear work lights; Rotating beacon; Rain guard; Biodegradable oil; Air suspension seat with heated pad and lumbar support adjustment; Lower screen wiper; Radio; High and low temperature hydraulic oil option.

STANDARD EQUIPMENT FOR XTRA DUTY BUILDS

Cab cage (FOPS level II); Visibowl pre-cleaner; Reinforced dipper; Reinforced bucket links; Impact buffer around upper structure; Heavy-duty 10mm underguards and trackmotor covers; Reinforced front light protection.

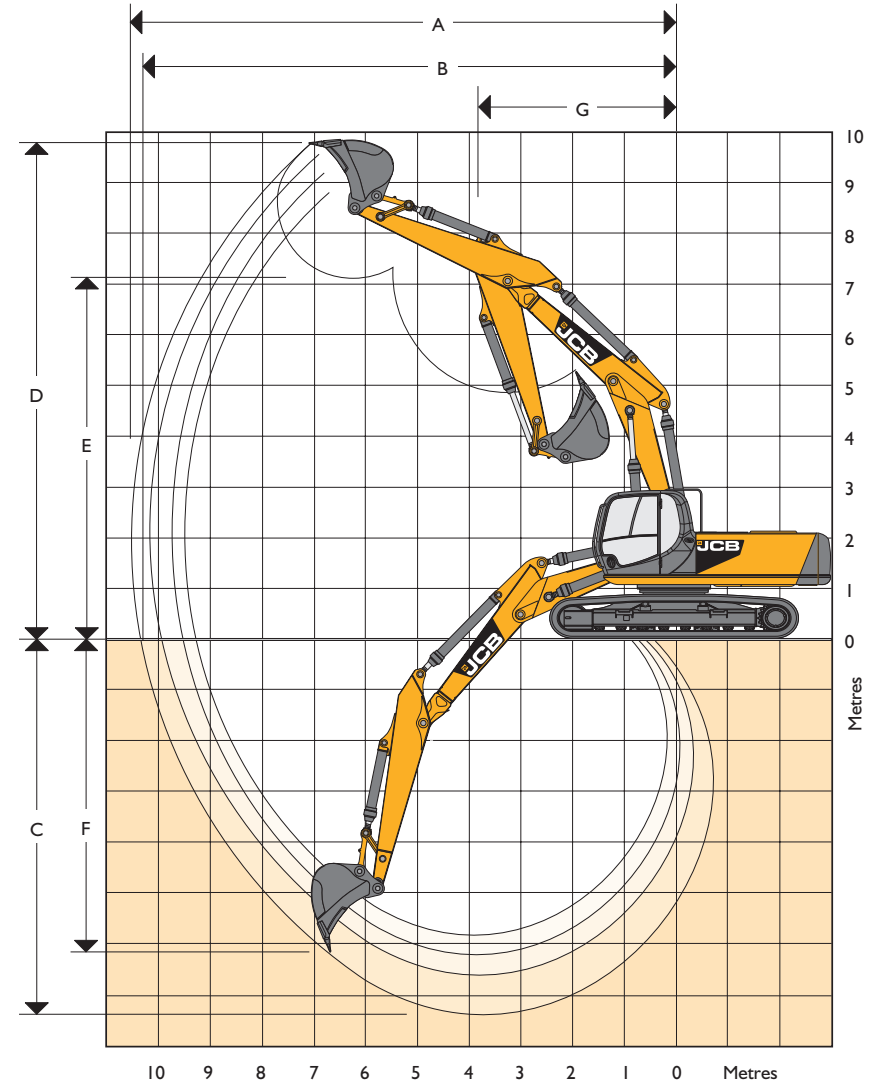
WORKING RANGE – JS260 NLC/SC/LC MONOBOOM

Dipper length	m	5.85m (19ft 2in) Monoboomb			
		2.00m (6ft 7in)	2.44m (8ft 0in)	3.09m (10ft 2in)	3.53m (11ft 7in)
A Maximum digging reach	m (ft-in)	9.19 (30-2)	9.64 (31-7)	10.27 (33-8)	10.69 (35-1)
B Maximum digging reach (on ground)	m (ft-in)	8.99 (29-6)	9.45 (31-0)	10.01 (32-10)	10.52 (34-6)
C Maximum digging depth	m (ft-in)	5.72 (18-9)	6.14 (20-2)	6.79 (22-3)	7.23 (23-8)
D Maximum digging height	m (ft-in)	8.84 (29-0)	9.23 (30-3)	9.62 (31-7)	9.85 (32-4)
E Maximum dumping height	m (ft-in)	6.15 (20-2)	6.47 (21-3)	6.83 (22-5)	7.05 (23-2)
F Maximum vertical wall cut depth	m (ft-in)	4.51 (14-9)	5.35 (17-7)	6.21 (20-4)	6.67 (21-10)
G Minimum swing radius	m (ft-in)	4.02 (13-2)	3.99 (13-1)	3.87 (12-8)	3.88 (12-9)
Bucket rotation	deg.	180°	180°	180°	180°
Max. Dipper tearout (ISO 6015)	kgf (lbf)	18272 (40285)	15484 (34136)	12248 (27002)	11198 (24685)
Max. Bucket tearout (ISO 6015)	kgf (lbf)	19574 (43154)	19574 (43154)	19574 (43154)	19574 (43154)



WORKING RANGE – JS260 NLC/SC/LC T.A.B.

Dimensions in m (ft-in)		6.24m (20ft 6in) T.A. Boom			
Dipper length	m	2.00m (6ft 7in)	2.44m (8ft 0in)	3.09m (10ft 2in)	3.53m (11ft 7in)
A Maximum digging reach	m (ft-in)	9.78 (32-1)	10.22 (21-8)	10.87 (35-8)	11.29 (37-0)
B Maximum digging reach (on ground)	m (ft-in)	9.59 (31-6)	10.05 (33-0)	10.70 (35-1)	11.13 (36-6)
C Maximum digging depth	m (ft-in)	5.85 (19-2)	6.30 (20-8)	6.95 (22-10)	7.40 (24-3)
D Maximum digging height	m (ft-in)	10.81 (35-6)	11.25 (36-11)	11.79 (38-8)	12.12 (39-9)
E Maximum dumping height	m (ft-in)	7.70 (25-3)	8.15 (26-9)	8.70 (28-7)	8.93 (29-4)
F Maximum vertical wall cut depth	m (ft-in)	4.47 (14-8)	5.11 (16-9)	5.79 (19-0)	6.26 (20-6)
G Minimum swing radius	m (ft-in)	3.06 (10-0)	3.23 (10-7)	2.82 (9-3)	2.89 (9-6)
Bucket rotation	deg.	180°	180°	180°	180°
Max. Dipper tearout (ISO 6015)	kgf (lbf)	18272 (40285)	15484 (34136)	12248 (27002)	11198 (24685)
Max. Bucket tearout (ISO 6015)	kgf (lbf)	19574 (43154)	19574 (43154)	19574 (43154)	19574 (43154)





LIFT CAPACITIES – Dipper length: 2.01m, 5.85m Monoboam, Trackshoes: 600mm, **No bucket.**

JS260 NLC MONO

Reach	1.5m (4ft 11in)		3m (9ft 10in)		4.5m (14ft 9in)		6m (19ft 8in)		7.5m (24ft 7in)		9m (29ft 6in)		Capacity at Max. Reach			
															kg	kg
Load Point Ht.	kg	kg	kg	kg	kg	kg	kg	kg	kg	kg	kg	kg	kg	kg	kg	mm
6.0m (19.8ft)							7380*	7080*						7300*	6180	6515
4.5m (14.9ft)					9700*	9700*	7870*	6830*						6210*	4980	7655
3.0m (9.10ft)					11660*	9520*	8670*	6470	7340*	4730				7260*	4590	7647
1.5m (4.11ft)							9350*	6160	7580*	4590				7390*	4420	7719
0m					12860*	8780	9590*	5990						7550*	4520	7491
- 1.5m (- 4.11ft)			13550*	13550*	12060*	8820	9180*	5970						7690*	5000	6931
- 3.0m (- 9.10ft)			12970*	12970*	10280*	9040								7620*	6240	5945
- 4.5m (- 14.9ft)																

LIFT CAPACITIES – Dipper length: 2.43m, 5.85m Monoboam, Trackshoes: 600mm, **No bucket.**

JS260 NLC MONO

Reach	1.5m (4ft 11in)		3m (9ft 10in)		4.5m (14ft 9in)		6m (19ft 8in)		7.5m (24ft 7in)		9m (29ft 6in)		Capacity at Max. Reach			
															kg	kg
Load Point Ht.	kg	kg	kg	kg	kg	kg	kg	kg	kg	kg	kg	kg	kg	kg	kg	mm
6.0m (19.8ft)							6890*	6890*						6760*	5490	7044
4.5m (14.9ft)					9050*	9050*	7470*	6890*	6750*	9890				6710*	4640	7741
3.0m (9.10ft)					11060*	9700*	8340*	6520	7060*	4740				6770*	4210	8101
1.5m (4.11ft)					12540*	9030	9120*	6170	7410*	4570				6800*	4060	8170
0m					12900*	8760	9510*	5960	7530*	4460				6990*	4140	7955
- 1.5m (- 4.11ft)			12320*	12320*	12370*	8730	9310*	5900						7180*	4520	7431
- 3.0m (- 9.10ft)			14400*	1440*	10910*	8890	8160*	6010						7180*	5440	6522
- 4.5m (- 14.9ft)					7660*	7660*								6570*	6570*	5018

- Lift capacity front and rear.
- Lift capacity full circle.

- Notes:
1. For lifting capacity including bucket, subtract total weight of bucket or bucket and quickhitch from above values.
 2. Lifting capacities are based on ISO 10567, that is: 75% of minimum tipping load or 87% of hydraulic lift capacity, whichever is the less. Lifting capacities marked* are based on hydraulic capacity.
 3. Lift capacities assume that the machine is on firm, level ground.
 4. Lift capacities may be limited by local regulations. Please refer to your dealer.



LIFT CAPACITIES – Dipper length: 3.09m, 5.85m Monoboom, Trackshoes: 600mm, **No bucket.**

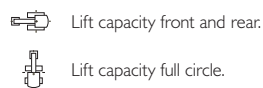
JS260 NLC MONO

Reach	1.5m (4ft 11in)		3m (9ft 10in)		4.5m (14ft 9in)		6m (19ft 8in)		7.5m (24ft 7in)		9m (29ft 6in)		Capacity at Max. Reach				
															kg	kg	mm
Load Point Ht.	kg	kg	kg	kg	kg	kg	kg	kg	kg	kg	kg	kg	kg	kg	kg	mm	
6.0m (19.8ft)									5450*	5070*				4080*	4080*	7777	
4.5m (14.9ft)							6830*	6830*	6210*	4970				4020*	4020*	8412	
3.0m (9.10ft)					10100*	10030*	7790*	6640*	6650*	4790				4100*	3760*	8744	
1.5m (4.11ft)					11930*	9230	8730*	6250	7120*	4590				4330*	3630	8807	
0m			6590*	6590*	12780*	8800	9330*	5970	7420*	4440				4760*	3690	8608	
- 1.5m (- 4.11ft)	7240*	7240*	11480*	11480*	12680*	8670	9410*	5840	7350*	4370				5520*	3960	8127	
- 3.0m (- 9.10ft)	12360*	12360*	16260*	16260*	11680*	8740	8750*	5870						6670*	4590	7308	
- 4.5m (- 14.9ft)			12720*	12720*	9390*	9020	6510*	6140						6490*	6130	6009	

LIFT CAPACITIES – Dipper length: 3.52m, 5.85m Monoboom, Trackshoes: 600mm, **No bucket.**

JS260 NLC MONO

Reach	1.5m (4ft 11in)		3m (9ft 10in)		4.5m (14ft 9in)		6m (19ft 8in)		7.5m (24ft 7in)		9m (29ft 6in)		Capacity at Max. Reach				
															kg	kg	mm
Load Point Ht.	kg	kg	kg	kg	kg	kg	kg	kg	kg	kg	kg	kg	kg	kg	kg	mm	
7.5m (24.7ft)														3780*	3780*	7289	
6.0m (19.8ft)									5570*	5130				3560*	3560*	8247	
4.5m (14.9ft)							6350*	6350*	5830*	5010	4060*	3890		3500*	3500*	8848	
3.0m (9.10ft)			14600*	14600*	9360*	9360*	7350*	6700*	6320*	4800	4520*	3590		3570*	3480	9164	
1.5m (4.11ft)					11350*	9330	8360*	6270	6850*	4580	5190*	3490		3750*	3360	9224	
0m			7210*	7210*	12490*	8790	9090*	5940	7250*	4390	4390*	3410		4090*	3390	9035	
- 1.5m (- 4.11ft)	6680*	6680*	10890*	10890*	12680*	8570	9340*	5770	7330*	4290				4670*	3610	8578	
- 3.0m (- 9.10ft)	10940*	10940*	16190*	16190*	11980*	8590	8940*	5750	6780*	4320				5740*	4120	7807	
- 4.5m (- 14.9ft)			14080*	14080*	10150*	8810	7420*	5920						6270*	5270	6609	
- 6.0m (- 19.8ft)																	



- Notes:
1. For lifting capacity including bucket, subtract total weight of bucket or bucket and quickhitch from above values.
 2. Lifting capacities are based on ISO 10567, that is: 75% of minimum tipping load or 87% of hydraulic lift capacity, whichever is the less. Lifting capacities marked* are based on hydraulic capacity.
 3. Lift capacities assume that the machine is on firm, level ground.
 4. Lift capacities may be limited by local regulations. Please refer to your dealer.



LIFT CAPACITIES – Dipper length: 2.01m, 5.85m Monoboam, Trackshoes: 600mm, **No bucket.**

JS260 SC MONO

Reach	1.5m (4ft 11in)		3m (9ft 10in)		4.5m (14ft 9in)		6m (19ft 8in)		7.5m (24ft 7in)		9m (29ft 6in)		Capacity at Max. Reach			
															kg	kg
Load Point Ht.	kg	kg	kg	kg	kg	kg	kg	kg	kg	kg	kg	kg	kg	kg	kg	mm
6.0m (19.8ft)							7380*	6970						7300*	6080	6515
4.5m (14.9ft)					9700*	9700*	7870*	6720						7210*	5010	7264
3.0m (9.10ft)					11660*	9360	8670*	6360	6820	4650				6620	4510	7647
1.5m (4.11ft)							9150	6050	6670	4510				6400	4340	7719
0m					12860*	8630	8950	5880	6690	4780				6600	4440	7491
- 1.5m (- 4.11ft)			13550*	13550*	12060*	8670	8940	5860						7350	4910	6931
- 3.0m (- 9.10ft)			12970*	12970*	10280*	8880								7620*	6130	5945
- 4.5m (- 14.9ft)																

LIFT CAPACITIES – Dipper length: 2.43m, 5.85m Monoboam, Trackshoes: 600mm, **No bucket.**

JS260 SC MONO

Reach	1.5m (4ft 11in)		3m (9ft 10in)		4.5m (14ft 9in)		6m (19ft 8in)		7.5m (24ft 7in)		9m (29ft 6in)		Capacity at Max. Reach			
															kg	kg
Load Point Ht.	kg	kg	kg	kg	kg	kg	kg	kg	kg	kg	kg	kg	kg	kg	kg	mm
6.0m (19.8ft)							6890*	6890*						6780*	5400	7044
4.5m (14.9ft)					9050*	9050*	7470*	6790	6750*	4810				6640	4560	7741
3.0m (9.10ft)					11060*	9540	8340*	6410	6830	4660				6070	4140	8101
1.5m (4.11ft)					12540*	8870	9120*	6070	6650	4490				5880	3990	8170
0m					12900*	8600	8930	5850	6530	4380				6040	4070	7955
- 1.5m (- 4.11ft)			12320*	12320*	12370*	8580	8870	5790						6620	4440	7431
- 3.0m (- 9.10ft)			14400*	14400*	10910*	8740	8160*	5910						7180*	5340	6522
- 4.5m (- 14.9ft)					7660*	7660*								6570*	6570*	5018

- Lift capacity front and rear.
- Lift capacity full circle.

- Notes:
1. For lifting capacity including bucket, subtract total weight of bucket or bucket and quickhitch from above values.
 2. Lifting capacities are based on ISO 10567, that is: 75% of minimum tipping load or 87% of hydraulic lift capacity, whichever is the less. Lifting capacities marked* are based on hydraulic capacity.
 3. Lift capacities assume that the machine is on firm, level ground.
 4. Lift capacities may be limited by local regulations. Please refer to your dealer.

LIFT CAPACITIES – Dipper length: 3.09m, 5.85m Monoboom, Trackshoes: 600mm, No bucket.
JS260 SC MONO

Reach	1.5m (4ft 11in)		3m (9ft 10in)		4.5m (14ft 9in)		6m (19ft 8in)		7.5m (24ft 7in)		9m (29ft 6in)		Capacity at Max. Reach			
															kg	mm
Load Point Ht.	kg	kg	kg	kg	kg	kg	kg	kg	kg	kg	kg	kg	kg	kg	kg	mm
6.0m (19.8ft)									5450*	4990			4080*	4080*	7777	
4.5m (14.9ft)							6830*	6830*	6210*	4890			4020*	4020*	8412	
3.0m (9.10ft)					10100*	9870	7790*	6530	6650*	4700			4100*	3700	8744	
1.5m (4.11ft)					11920*	9080	8730*	6140	6670	4510			4330*	3570	8807	
0m			6590*	6590*	12780*	8640	8950	5860	6510	4350			4760*	3620	8608	
- 1.5m (- 4.11ft)	7240*	7240*	11480*	11480*	12680*	8510	8810	5740	6440	4290			5520*	3880	8127	
- 3.0m (- 9.10ft)	12360*	12360*	16260*	16260*	11680*	8580	8750*	5770					6670*	4510	7308	
- 4.5m (- 14.9ft)			12720*	12720*	9390*	8870	6510*	6030					6490*	6020	6009	

LIFT CAPACITIES – Dipper length: 3.52m, 5.85m Monoboom, Trackshoes: 600mm, No bucket.
JS260 SC MONO

Reach	1.5m (4ft 11in)		3m (9ft 10in)		4.5m (14ft 9in)		6m (19ft 8in)		7.5m (24ft 7in)		9m (29ft 6in)		Capacity at Max. Reach			
															kg	mm
Load Point Ht.	kg	kg	kg	kg	kg	kg	kg	kg	kg	kg	kg	kg	kg	kg	kg	mm
7.5m (24.7ft)														3780*	3780*	7289
6.0m (19.8ft)									5570*	5050				3560*	3560*	8247
4.5m (14.9ft)							6350*	6350*	5830*	4930				3500*	3500*	8848
3.0m (9.10ft)			14600*	14600*	9360*	9360*	7350*	6590	6320*	4720	4520*	3520		3570*	3410	9164
1.5m (4.11ft)					11350*	9180	8360*	6160	6670	4490	5080	3420		3750*	3290	9224
0m			7210*	7210*	12490*	8630	8930	5840	6470	4310	4390*	3350		4090*	3330	9035
- 1.5m (- 4.11ft)	6680*	6680*	10890*	10890*	12680*	8410	8740	5660	6362	4210				4670*	3540	8578
- 3.0m (- 9.10ft)	10940*	10940*	16190*	16120	11980*	8430	8720	5650	6390	4240				5740*	4040	7807
- 4.5m (- 14.9ft)			14080*	14080*	10150*	8650	7420*	5820						6270*	5170	6609
- 6.0m (- 19.8ft)																

Lift capacity front and rear.

Lift capacity full circle.

- Notes:**
1. For lifting capacity including bucket, subtract total weight of bucket or bucket and quickhitch from above values.
 2. Lifting capacities are based on ISO 10567, that is: 75% of minimum tipping load or 87% of hydraulic lift capacity, whichever is the less. Lifting capacities marked* are based on hydraulic capacity.
 3. Lift capacities assume that the machine is on firm, level ground.
 4. Lift capacities may be limited by local regulations. Please refer to your dealer.



LIFT CAPACITIES – Dipper length: 2.01m, 5.85m Monoboam, Trackshoes: 700mm, **No bucket.**

JS260 LC MONO

Reach	1.5m (4ft 11in)		3m (9ft 10in)		4.5m (14ft 9in)		6m (19ft 8in)		7.5m (24ft 7in)		9m (29ft 6in)		Capacity at Max. Reach			
															kg	kg
Load Point Ht.	kg	kg	kg	kg	kg	kg	kg	kg	kg	kg	kg	kg	kg	kg	kg	mm
6.0m (19.8ft)							7380*	7380*						7300*	6750	6515
4.5m (14.9ft)					9700*	9700*	7870*	7480						7210*	5580	7264
3.0m (9.10ft)					11660*	10560	8670*	7110	7340*	5190				7260*	5040	7647
1.5m (4.11ft)							9350*	6790	7580*	5050				7390*	4850	7719
0m					12860*	9800	9590*	6620						7550*	4980	7491
- 1.5m (- 4.11ft)			13550*	13550*	12060*	9840	9180*	6600						7690*	5510	6931
- 3.0m (- 9.10ft)			12970*	12970*	10280*	10060*								7620*	6880	5945
- 4.5m (- 14.9ft)																

LIFT CAPACITIES – Dipper length: 2.43m, 5.85m Monoboam, Trackshoes: 700mm, **No bucket.**

JS260 LC MONO

Reach	1.5m (4ft 11in)		3m (9ft 10in)		4.5m (14ft 9in)		6m (19ft 8in)		7.5m (24ft 7in)		9m (29ft 6in)		Capacity at Max. Reach			
															kg	kg
Load Point Ht.	kg	kg	kg	kg	kg	kg	kg	kg	kg	kg	kg	kg	kg	kg	kg	mm
6.0m (19.8ft)							6890*	6890*						6760*	6000	7044
4.5m (14.9ft)					9050*	9050*	7470*	7470*	6750*	5350				6710*	5080	7741
3.0m (9.10ft)					11060*	10750	8340*	7160	7060*	5200				6770*	4620	8101
1.5m (4.11ft)					12540*	10060	9120*	6810	7410*	5030				6880	4470	8170
0m					12900*	9780	9510*	6590	7530*	4920				7040*	4560	7955
- 1.5m (- 4.11ft)			12320*	12320*	12370*	9760	9310*	6530						7180*	4980	7431
- 3.0m (- 9.10ft)			14400*	14400*	10910*	9920	8160*	6650						7180*	6000	6522
- 4.5m (- 14.9ft)					7660*	7660*								6570*	6570*	5018

- Lift capacity front and rear.
- Lift capacity full circle.

- Notes:**
1. For lifting capacity including bucket, subtract total weight of bucket or bucket and quickhitch from above values.
 2. Lifting capacities are based on ISO 10567, that is: 75% of minimum tipping load or 87% of hydraulic lift capacity, whichever is the less. Lifting capacities marked* are based on hydraulic capacity.
 3. Lift capacities assume that the machine is on firm, level ground.
 4. Lift capacities may be limited by local regulations. Please refer to your dealer.



LIFT CAPACITIES – Dipper length: 3.09m, 5.85m Monoboom, Trackshoes: 700mm, **No bucket.**

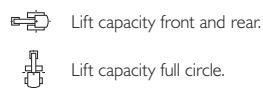
JS260 LC MONO

Reach	1.5m (4ft 11in)		3m (9ft 10in)		4.5m (14ft 9in)		6m (19ft 8in)		7.5m (24ft 7in)		9m (29ft 6in)		Capacity at Max. Reach				
															kg	kg	mm
Load Point Ht.	kg	kg	kg	kg	kg	kg	kg	kg	kg	kg	kg	kg	kg	kg	kg	mm	
6.0m (19.8ft)										5450*	5450*			4080*	4080*	7777	
4.5m (14.9ft)							6830*	6830*		6210*	5440			4020*	4020*	8412	
3.0m (9.10ft)					10100*	10100*	7790*	7290		6650*	5250			4100*	4100*	8744	
1.5m (4.11ft)					11920*	10270	8730*	6890		7120*	5050			4330*	4000	8807	
0m			6590*	6590*	12780*	9820	9330*	6610		7420*	4890			4760*	4060	8608	
- 1.5m (- 4.11ft)	7240*	7240*	11480*	11480*	12680*	9690	9410*	6480		7350*	4830			5520*	4370	8127	
- 3.0m (- 9.10ft)	12360*	12360*	16260*	16260*	11680*	9760	8750*	6510						6670*	5070	7308	
- 4.5m (- 14.9ft)			12720*	12720*	9390*	9390*	6510*	6510*						6490*	4690*	6009	

LIFT CAPACITIES – Dipper length: 3.52m, 5.85m Monoboom, Trackshoes: 700mm, **No bucket.**

JS260 LC MONO

Reach	1.5m (4ft 11in)		3m (9ft 10in)		4.5m (14ft 9in)		6m (19ft 8in)		7.5m (24ft 7in)		9m (29ft 6in)		Capacity at Max. Reach				
															kg	kg	mm
Load Point Ht.	kg	kg	kg	kg	kg	kg	kg	kg	kg	kg	kg	kg	kg	kg	kg	mm	
7.5m (24.7ft)														3780*	3780*	7289	
6.0m (19.8ft)									5570*	5570*				3560*	3560*	8247	
4.5m (14.9ft)							6350*	6350*	5830*	5470				3500*	3500*	8848	
3.0m (9.10ft)			14600*	14600*	9360*	9360*	7350*	7350	6320*	5260	4520*	3950		3570*	3570*	9164	
1.5m (4.11ft)					11350*	10380	8360*	6910	6850*	5030	5190*	3850		3752*	3700	9224	
0m			7210*	7210*	12490*	9810	9090*	6580	7250*	4850	4390*	3770		4090*	3750	9035	
- 1.5m (- 4.11ft)	6680*	6680*	10890*	10890*	12680*	9590	9340*	6400	7330*	4750				4670*	3990	8578	
- 3.0m (- 9.10ft)	10940*	10940*	16190*	16190*	11980*	9610	8940*	6390	6780*	4770				5740*	4550	7807	
- 4.5m (- 14.9ft)			14080*	14080*	10150*	9830*	7420*	6560						6270*	5820	6609	
- 6.0m (- 19.8ft)																	



- Notes:
1. For lifting capacity including bucket, subtract total weight of bucket or bucket and quickhitch from above values.
 2. Lifting capacities are based on ISO 10567, that is: 75% of minimum tipping load or 87% of hydraulic lift capacity, whichever is the less. Lifting capacities marked* are based on hydraulic capacity.
 3. Lift capacities assume that the machine is on firm, level ground.
 4. Lift capacities may be limited by local regulations. Please refer to your dealer.

LIFT CAPACITIES – Dipper length: 2.01m, 6.24m T.A. Boom, Trackshoes: 600mm, No bucket.
JS260 NLC T.A.B.

Reach	1.5m (4ft 11in)		3m (9ft 10in)		4.5m (14ft 9in)		6m (19ft 8in)		7.5m (24ft 7in)		9m (29ft 6in)		Capacity at Max. Reach			
															kg	kg
Load Point Ht.	kg	kg	kg	kg	kg	kg	kg	kg	kg	kg	kg	kg	kg	kg	kg	mm
7.5m (24.7ft)					10040*	10040*								8680*	7280	5865
6.0m (19.8ft)			14720*	14720*	10550*	10550*	8540*	6950						7710*	5340	7024
4.5m (14.9ft)					11680*	9960	8900*	6590	7360*	4690				7180*	4470	7723
3.0m (9.10ft)							9250*	6150	7390*	4520				6810*	4040	8084
1.5m (4.11ft)							9230*	5810	7240*	4350				6460*	3890	8152
0m							8600*	5640	6660*	4260				6030*	3980	7937
- 1.5m (- 4.11ft)					8530*	8420	7250*	5650						5340*	4370	7411
- 3.0m (- 9.10ft)							4810*	4810*						4650*	4650*	6130

LIFT CAPACITIES – Dipper length: 2.43m, 6.24m T.A. Boom, Trackshoes: 600mm, No bucket.
JS260 NLC T.A.B.

Reach	1.5m (4ft 11in)		3m (9ft 10in)		4.5m (14ft 9in)		6m (19ft 8in)		7.5m (24ft 7in)		9m (29ft 6in)		Capacity at Max. Reach			
															kg	kg
Load Point Ht.	kg	kg	kg	kg	kg	kg	kg	kg	kg	kg	kg	kg	kg	kg	kg	mm
9.0m (29.6ft)					9950*	9950*								9250*	9250*	4724
7.5m (24.7ft)					9530*	9530*	8150*	7170						7890*	6250	6475
6.0m (19.8ft)					10080*	10080*	8230*	7050	7150*	4840				7130*	4790	7540
4.5m (14.9ft)					11240*	10220	8660*	6680	7190*	4740				6680*	4080	8194
3.0m (9.10ft)					12360*	9120	9100*	6210	7300*	4530				6360	3720	8534
1.5m (4.11ft)							9220*	5830	7250*	4330				6050*	3590	8559
0m					11170*	8250	8780*	5610	6840*	4210				5680*	3650	8395
- 1.5m (- 4.11ft)					9370*	8300	7650*	5570	5770*	4200				5100*	3960	7901
- 3.0m (- 9.10ft)					6770*	6770*	5230*	5600*						4060*	4060*	7055

Lift capacity front and rear.

Lift capacity full circle.

- Notes:**
1. For lifting capacity including bucket, subtract total weight of bucket or bucket and quickhitch from above values.
 2. Lifting capacities are based on ISO 10567, that is: 75% of minimum tipping load or 87% of hydraulic lift capacity, whichever is the less. Lifting capacities marked* are based on hydraulic capacity.
 3. Lift capacities assume that the machine is on firm, level ground.
 4. Lift capacities may be limited by local regulations. Please refer to your dealer.



LIFT CAPACITIES – Dipper length: 3.09m, 6.24m T.A. Boom, Trackshoes: 600mm, No bucket.

JS260 NLC T.A.B.

Reach	1.5m (4ft 11in)		3m (9ft 10in)		4.5m (14ft 9in)		6m (19ft 8in)		7.5m (24ft 7in)		9m (29ft 6in)		Capacity at Max. Reach			
															kg	kg
Load Point Ht.	kg	kg	kg	kg	kg	kg	kg	kg	kg	kg	kg	kg	kg	kg	kg	mm
7.5m (24.7ft)							7170*	7170*						4870*	4870*	7292
6.0m (19.8ft)					7400*	7400*	7750*	7240	6760*	4990				4610*	4180	8250
4.5m (14.9ft)			15500*	15500*	10530*	10530*	8260*	6850	6920*	4830				4550*	3630	8851
3.0m (9.10ft)					11880*	9530	8830*	6360	7140*	4590	5780*	3440		4630*	3340	9167
1.5m (4.11ft)					12460*	8660	9160*	5910	7230*	4360	5780	3340		4880*	3220	9227
0m					11880*	8270	8980*	5620	7020*	4190	5340*	3280		5290*	3260	9038
- 1.5m (- 4.11ft)			8300*	8300*	10430*	8200	8170*	5510	6310*	4120				4860*	3490	8581
- 3.0m (- 9.10ft)					8180*	8180*	6570*	5560	4700*	4190				4130*	4010	7810

LIFT CAPACITIES – Dipper length: 3.52m, 6.24m T.A. Boom, Trackshoes: 600mm, No bucket.

JS260 NLC T.A.B.

Reach	1.5m (4ft 11in)		3m (9ft 10in)		4.5m (14ft 9in)		6m (19ft 8in)		7.5m (24ft 7in)		9m (29ft 6in)		Capacity at Max. Reach			
															kg	kg
Load Point Ht.	kg	kg	kg	kg	kg	kg	kg	kg	kg	kg	kg	kg	kg	kg	kg	mm
9.0m (29.6ft)							5770*	5770*						4710*	4710*	6453
7.5m (24.7ft)							6280*	6280*	5210*	5080				4220*	4220*	7819
6.0m (19.8ft)							6590*	6590*	6360*	5060				4010*	3810	8718
4.5m (14.9ft)			8940*	8990*	8380*	8380*	7920*	6950	6690*	4870	5190*	3550		3960*	3340	9288
3.0m (9.10ft)					11420*	9760	8550*	6440	6950*	4610	5860*	3440		4030*	3080	9589
1.5m (4.11ft)					12290*	8770	9000*	5940	7120*	4350	5760*	3310		4220*	2970	9647
0m			4250*	4250*	12070*	8240	8980*	5590	7020*	4140	5530*	3200		4560*	3000	9466
- 1.5m (- 4.11ft)			8000*	8000*	10910*	8080	8370*	5430	6990*	4040	4700*	3200		4650*	3190	9032
- 3.0m (- 9.10ft)			10620*	10620*	8910*	8150	7030*	5430	5260*	4060				4060*	3610	9304
- 4.5m (- 14.9ft)							4620*	4620*						4230*	4230*	6351

- Lift capacity front and rear.
- Lift capacity full circle.

- Notes:
1. For lifting capacity including bucket, subtract total weight of bucket or bucket and quickhitch from above values.
 2. Lifting capacities are based on ISO 10567, that is: 75% of minimum tipping load or 87% of hydraulic lift capacity, whichever is the less. Lifting capacities marked* are based on hydraulic capacity.
 3. Lift capacities assume that the machine is on firm, level ground.
 4. Lift capacities may be limited by local regulations. Please refer to your dealer.

LIFT CAPACITIES – Dipper length: 2.01m, 6.24m T.A. Boom, Trackshoes: 600mm, No bucket.
JS260 SC T.A.B.

Reach	1.5m (4ft 11in)		3m (9ft 10in)		4.5m (14ft 9in)		6m (19ft 8in)		7.5m (24ft 7in)		9m (29ft 6in)		Capacity at Max. Reach			
															kg	kg
Load Point Ht.	kg	kg	kg	kg	kg	kg	kg	kg	kg	kg	kg	kg	kg	kg	kg	mm
7.5m (24.7ft)					10040*	10040*								8680*	7170	5865
6.0m (19.8ft)			14720*	14720*	10550*	10550*	8540*	6840						7710*	5250	7024
4.5m (14.9ft)					11680*	9810	8900*	6480	6860	4610				6530	4390	7723
3.0m (9.10ft)							9240	6040	6660	4440				5950	3970	8084
1.5m (4.11ft)							8860	5700	6480	4270				5770	3820	8152
0m							8600*	5530	6380	4180				5930	3900	7937
- 1.5m (- 4.11ft)					8530*	8270	7250*	5540						5340*	4280	7411
- 3.0m (- 9.10ft)							4810*	4810*						4650*	4650*	6293

LIFT CAPACITIES – Dipper length: 2.43m, 6.24m T.A. Boom, Trackshoes: 600mm, No bucket.
JS260 SC T.A.B.

Reach	1.5m (4ft 11in)		3m (9ft 10in)		4.5m (14ft 9in)		6m (19ft 8in)		7.5m (24ft 7in)		9m (29ft 6in)		Capacity at Max. Reach			
															kg	kg
Load Point Ht.	kg	kg	kg	kg	kg	kg	kg	kg	kg	kg	kg	kg	kg	kg	kg	mm
9.0m (29.6ft)					9950*	9950*								9250*	9250*	4724
7.5m (24.7ft)					9530*	9530*	8150*	7060						7890*	6150	6475
6.0m (19.8ft)					10080*	10080*	8230*	6940	7020	4750				6950	4710	7540
4.5m (14.9ft)					11240*	10060	8660*	6570	6910	4660				5960	4000	8194
3.0m (9.10ft)					12360*	8970	9100*	6110	6690	4450				5480	3650	8534
1.5m (4.11ft)							8890	5720	6470	4250				5320	3520	8599
0m					11170*	8100	8650	5500	6300	4130				5450	3580	8395
- 1.5m (- 4.11ft)					9370*	8150	7650*	5460	5770*	4120				5100*	3890	7901
- 3.0m (- 9.10ft)					6770*	6770*	5600*	5590						4060*	4060*	7066

Lift capacity front and rear.

Lift capacity full circle.

- Notes:**
1. For lifting capacity including bucket, subtract total weight of bucket or bucket and quickhitch from above values.
 2. Lifting capacities are based on ISO 10567, that is: 75% of minimum tipping load or 87% of hydraulic lift capacity, whichever is the less. Lifting capacities marked* are based on hydraulic capacity.
 3. Lift capacities assume that the machine is on firm, level ground.
 4. Lift capacities may be limited by local regulations. Please refer to your dealer.

LIFT CAPACITIES – Dipper length: 3.09m, 6.24m T.A. Boom, Trackshoes: 600mm, No bucket.
JS260 SC T.A.B.

Reach	1.5m (4ft 11in)		3m (9ft 10in)		4.5m (14ft 9in)		6m (19ft 8in)		7.5m (24ft 7in)		9m (29ft 6in)		Capacity at Max. Reach		
															mm
Load Point Ht.	kg	kg	kg	kg	kg	kg	kg	kg	kg	kg	kg	kg	kg	kg	mm
7.5m (24.7ft)							7170*	7170*					4870*	4870*	7292
6.0m (19.8ft)					7400*	7400*	7750*	7130	6760*	4910			4610*	4110	8250
4.5m (14.9ft)			15500*	15500*	10530*	10480	8260*	6740	6920*	4750			4550*	3560	8851
3.0m (9.10ft)					11880*	9370	8830*	6250	6760	4510	5080	3380	4630*	3270	9167
1.5m (4.11ft)					12460*	8500	8990	5810	6500	4270	4980	3280	4790	3160	9227
0m					11880*	8110	8670	5520	6310	4100	4910	3210	4880	3200	9038
- 1.5m (- 4.11ft)			8300*	8300*	10430*	8040	8170*	5400	6240	4040			4860*	3420	8581
- 3.0m (- 9.10ft)					8180*	8170	6570*	5450	4700*	4110			4130*	3930	7810

LIFT CAPACITIES – Dipper length: 3.52m, 6.24m T.A. Boom, Trackshoes: 600mm, No bucket.
JS260 SC T.A.B.

Reach	1.5m (4ft 11in)		3m (9ft 10in)		4.5m (14ft 9in)		6m (19ft 8in)		7.5m (24ft 7in)		9m (29ft 6in)		Capacity at Max. Reach		
															mm
Load Point Ht.	kg	kg	kg	kg	kg	kg	kg	kg	kg	kg	kg	kg	kg	kg	mm
9.0m (29.6ft)							5770*	5770*					4710*	4710*	6453
7.5m (24.7ft)							6280*	6280*	5210*	5000			4220*	4220*	7819
6.0m (19.8ft)							6590*	6590*	6360*	4980			4010*	3740	8718
4.5m (14.9ft)			8940*	8940*	8380*	83870*	7920*	6850	6690*	4790	5190*	3490	3960*	3280	9288
3.0m (9.10ft)					11420*	9600	8550*	6330	6780	4530	5090	3380	4030*	3020	9589
1.5m (4.11ft)					12290*	8610	9000*	5830	6500	4270	4950	3250	4220*	2910	9647
0m			4250*	4250*	12070*	8080	8650	5490	6280	4060	4850	3150	4520	2940	9466
- 1.5m (- 4.11ft)			8000*	8000*	10910*	7920	8370*	5320	6160	3960	4700*	3130	4650*	3120	9032
- 3.0m (- 9.10ft)			10620*	10620*	8910*	7990	7030*	5320	5260*	3980			4060*	3540	8304
- 4.5m (- 14.9ft)							4620*	4620*					4230*	4230*	6351

Lift capacity front and rear.

Lift capacity full circle.

- Notes:**
1. For lifting capacity including bucket, subtract total weight of bucket or bucket and quickhitch from above values.
 2. Lifting capacities are based on ISO 10567, that is: 75% of minimum tipping load or 87% of hydraulic lift capacity, whichever is the less. Lifting capacities marked* are based on hydraulic capacity.
 3. Lift capacities assume that the machine is on firm, level ground.
 4. Lift capacities may be limited by local regulations. Please refer to your dealer.

LIFT CAPACITIES – Dipper length: 2.01m, 6.24m T.A. Boom, Trackshoes: 600mm, No bucket.
JS260 LC T.A.B.

Reach	1.5m (4ft 11in)		3m (9ft 10in)		4.5m (14ft 9in)		6m (19ft 8in)		7.5m (24ft 7in)		9m (29ft 6in)		Capacity at Max. Reach			
															kg	kg
Load Point Ht.	kg	kg	kg	kg	kg	kg	kg	kg	kg	kg	kg	kg	kg	kg	kg	mm
7.5m (24.7ft)					10040*	10040*								8680*	7980	5865
6.0m (19.8ft)			14720*	14720*	10550*	10550*	8540*	7620						7710*	5870	7024
4.5m (14.9ft)					11680*	11050*	8900*	7260	7360*	5170				7180*	4920	7723
3.0m (9.10ft)							9250*	6810	7390*	4990				6810*	4460	8084
1.5m (4.11ft)							9230*	6450	7240*	4810				6460*	4310	8152
0m							8600*	6280	6660*	4720				6030*	4410	7937
- 1.5m (- 4.11ft)					8530*	8530*	7250*	6290						5340*	4840	7411
- 3.0m (- 9.10ft)							4810*	4810*						4650*	4650*	6130

LIFT CAPACITIES – Dipper length: 2.43m, 6.24m T.A. Boom, Trackshoes: 600mm, No bucket.
JS260 LC T.A.B.

Reach	1.5m (4ft 11in)		3m (9ft 10in)		4.5m (14ft 9in)		6m (19ft 8in)		7.5m (24ft 7in)		9m (29ft 6in)		Capacity at Max. Reach			
															kg	kg
Load Point Ht.	kg	kg	kg	kg	kg	kg	kg	kg	kg	kg	kg	kg	kg	kg	kg	mm
9.0m (29.6ft)					9950*	9950*								9250*	9250*	4724
7.5m (24.7ft)					8530*	9530*	8150*	7850						7890*	6840	6475
6.0m (19.8ft)					10080*	10080*	8230*	7730	7150*	5310				7130*	5260	7540
4.5m (14.9ft)					11240*	11240*	8660*	7340	7190*	5210				6680*	4490	8194
3.0m (9.10ft)					12360*	10180	9100*	6870	7300*	5000				6360*	4110	8534
1.5m (4.11ft)							9220*	6480	7250*	4800				6050*	3970	8599
0m					11170*	9290	8780*	6260	6840*	4670				5680*	4050	8395
- 1.5m (- 4.11ft)					9370*	9340	7650*	6220	5770*	4670				5100*	4400	7901
- 3.0m (- 9.10ft)					6770*	6770*	5600*	5600*						4060*	4060*	7055

Lift capacity front and rear.

Lift capacity full circle.

- Notes:**
1. For lifting capacity including bucket, subtract total weight of bucket or bucket and quickhitch from above values.
 2. Lifting capacities are based on ISO 10567, that is: 75% of minimum tipping load or 87% of hydraulic lift capacity, whichever is the less. Lifting capacities marked* are based on hydraulic capacity.
 3. Lift capacities assume that the machine is on firm, level ground.
 4. Lift capacities may be limited by local regulations. Please refer to your dealer.

LIFT CAPACITIES – Dipper length: 3.09m, 6.24m T.A. Boom, Trackshoes: 600mm, No bucket.
JS260 LC T.A.B.

Reach	1.5m (4ft 11in)		3m (9ft 10in)		4.5m (14ft 9in)		6m (19ft 8in)		7.5m (24ft 7in)		9m (29ft 6in)		Capacity at Max. Reach			
															kg	kg
Load Point Ht.	kg	kg	kg	kg	kg	kg	kg	kg	kg	kg	kg	kg	kg	kg	kg	mm
7.5m (24.7ft)							7170*	7170*						4870*	4870*	7292
6.0m (19.8ft)					7400*	7400*	7750*	7750*	6760*	5470				4610*	4590	8250
4.5m (14.9ft)			15500*	15500*	10530*	10530*	8260*	7520	6920*	5310				4550*	4000	8851
3.0m (9.10ft)					11880*	10600	8830*	7020	7140*	5060	5780*	3810		4630*	3690	9167
1.5m (4.11ft)					12460*	9700	9160*	6570	7230*	4830	5810*	3710		4880*	3570	9227
0m					11880*	9300	8980*	6270	7020*	4650	5340*	3640		5290*	3620	9038
- 1.5m (- 4.11ft)			8300*	8300*	10430*	9230	8170*	6150	6310*	4580				4860*	3880	8581
- 3.0m (- 9.10ft)					8180*	8180*	6570*	6210	4700*	4660				4130*	4130*	7810

LIFT CAPACITIES – Dipper length: 3.52m, 6.24m T.A. Boom, Trackshoes: 600mm, No bucket.
JS260 LC T.A.B.

Reach	1.5m (4ft 11in)		3m (9ft 10in)		4.5m (14ft 9in)		6m (19ft 8in)		7.5m (24ft 7in)		9m (29ft 6in)		Capacity at Max. Reach			
															kg	kg
Load Point Ht.	kg	kg	kg	kg	kg	kg	kg	kg	kg	kg	kg	kg	kg	kg	kg	mm
9.0m (29.6ft)							5770*	5770*						4710*	4710*	6453
7.5m (24.7ft)							6280*	6280*	5210*	5210*				4220*	4220*	7819
6.0m (19.8ft)							6590*	6590*	6360*	5540				4010*	4010*	8718
4.5m (14.9ft)			8940*	8940*	8380*	8380*	7920*	7630	6690*	5350	5190*	3920		3960*	3690	9288
3.0m (9.10ft)					11420*	10850	8550*	7100	6950*	5090	5860*	3810		4030*	3420	9589
1.5m (4.11ft)					12290*	9820	9000*	6600	7120*	4820	5820*	3680		4220*	3300	9647
0m			4250*	4250*	12070*	9270	8980*	6240	7020*	4610	5530*	3580		4560*	3340	9466
- 1.5m (- 4.11ft)			8000*	8000*	10910*	9110	8370*	6070	6490*	4500	4700*	3560		4650*	3550	9032
- 3.0m (- 9.10ft)			10620*	10620*	8910*	8910*	7030*	6080	5260*	4530				4060*	4010	8304
- 4.5m (- 14.9ft)							4620*	4620*						4230*	4230*	6351

Lift capacity front and rear.

Lift capacity full circle.

- Notes:**
1. For lifting capacity including bucket, subtract total weight of bucket or bucket and quickhitch from above values.
 2. Lifting capacities are based on ISO 10567, that is: 75% of minimum tipping load or 87% of hydraulic lift capacity, whichever is the less. Lifting capacities marked* are based on hydraulic capacity.
 3. Lift capacities assume that the machine is on firm, level ground.
 4. Lift capacities may be limited by local regulations. Please refer to your dealer.



A GLOBAL COMMITMENT TO QUALITY

JCB's total commitment to its products and customers has helped it grow from a one-man business into Britain's largest privately owned manufacturer of backhoe loaders, crawler excavators, wheeled excavators, telescopic handlers, wheeled loaders, dump trucks, rough terrain fork lifts, industrial fork lifts, mini/midi excavators, skid steer loaders and tractors.

By making constant and massive investments in the latest production technology, the JCB factories have become some of the most advanced in Europe.

By leading the field in innovative research and design, extensive testing and stringent quality control, JCB machines have become renowned all over the world for performance, value and reliability.

And with a global sales and service network of over 400 distributors and agents, the company exports over 70% of its production to all five continents.

Through setting the standards by which others are judged, JCB has become one of Britain's most impressive success stories.



JCB Sales Limited, Rokester, Staffordshire ST14 5JP. Tel: 01889 590312. Fax: 01889 590588. Web: <http://www.jcb.com>

JCB reserves the right to change specifications without notice. Illustrations shown may include optional equipment and accessories. The JCB logo is a registered trademark of J C Bamford Excavators Ltd.

